



# Installation Instructions

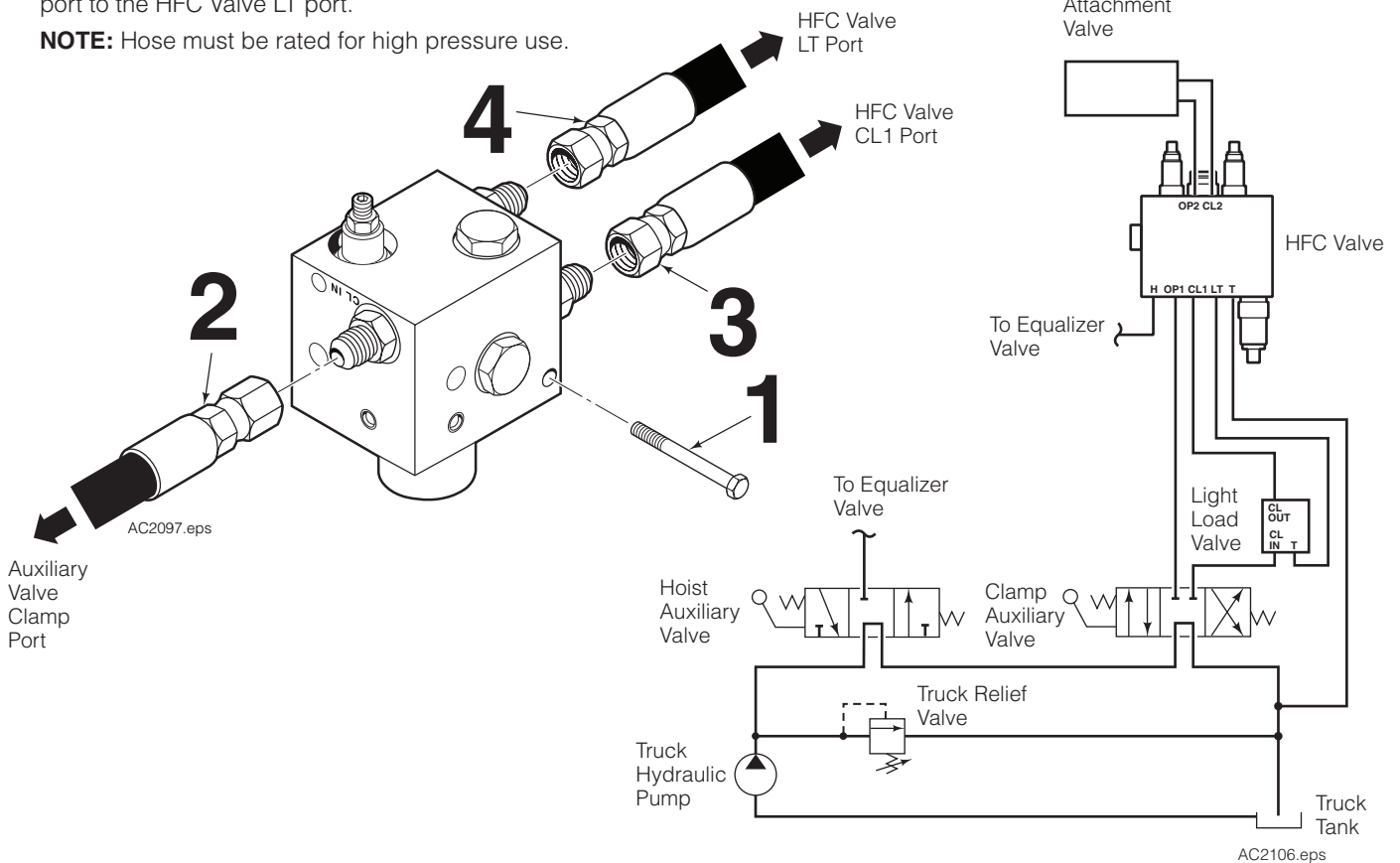
## Carton Clamp HFC Light Load Kits 6818186, 6818287

This sheet provides installation instructions, cartridge adjustment and parts list for Cascade Light Load Kits for Carton Clamp Hydraulic Force Control (HFC). When energized, the valve relieves (lowers) clamp pressure so that a single layer of product (or any light load) can be clamped without being damaged.

### INSTALLATION

- 1 Determine a location on the truck cowl to mount the Light Load Valve to connect between the clamp auxiliary valve and HFC valve.
- 2 Install a hose from the Light Load Valve CL IN port to the truck auxiliary valve (CLAMP) port.
- 3 Install a hose from the Light Load Valve CL OUT port to HFC valve CL1 port.
- 4 Install a hose from the Light Load Valve TANK OUT port to the HFC Valve LT port.

**NOTE:** Hose must be rated for high pressure use.



**cascade**<sup>®</sup>  
corporation

#### For Technical Support . . .

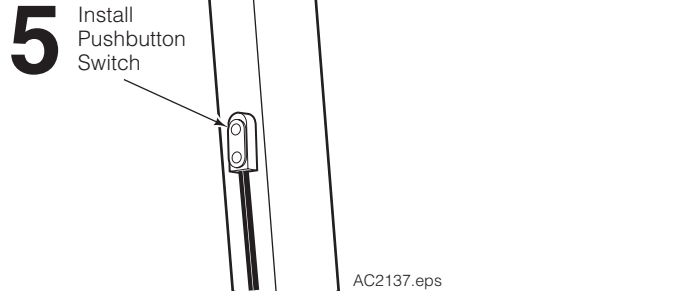
Call: 1-800-227-2233 Fax: 1-888-329-8207  
Internet: [www.cascorp.com](http://www.cascorp.com)  
Write: Cascade Corporation, PO Box 20187, Portland, OR 97294

#### To Order Parts . . .

Call: 1-888-227-2233 Fax: 1-888-329-0234  
Internet: [www.cascorp.com](http://www.cascorp.com)  
Write: Cascade Corporation, 2501 Sheridan Ave., Springfield, OH 45505

- 5 Install the pushbutton switch on overhead guard or on a flat surface with the adhesive tape included.

**NOTE:** Before installing the switch, clean the mounting surface and the back of the switch with rubbing alcohol .



- 6 Locate and mount the cab light on the truck dashboard or overhead guard with the velcro provided. Position for best peripheral viewing due to brightness of lights.

**CAUTION:** Consult the Lift Truck OEM for proper + power source connection.

- 7 Disconnect the cable from the positive battery terminal.

**12V Systems** – Connect the fused positive wire from the cable harness to a 12V switched power source and the ground wire to a chassis ground.

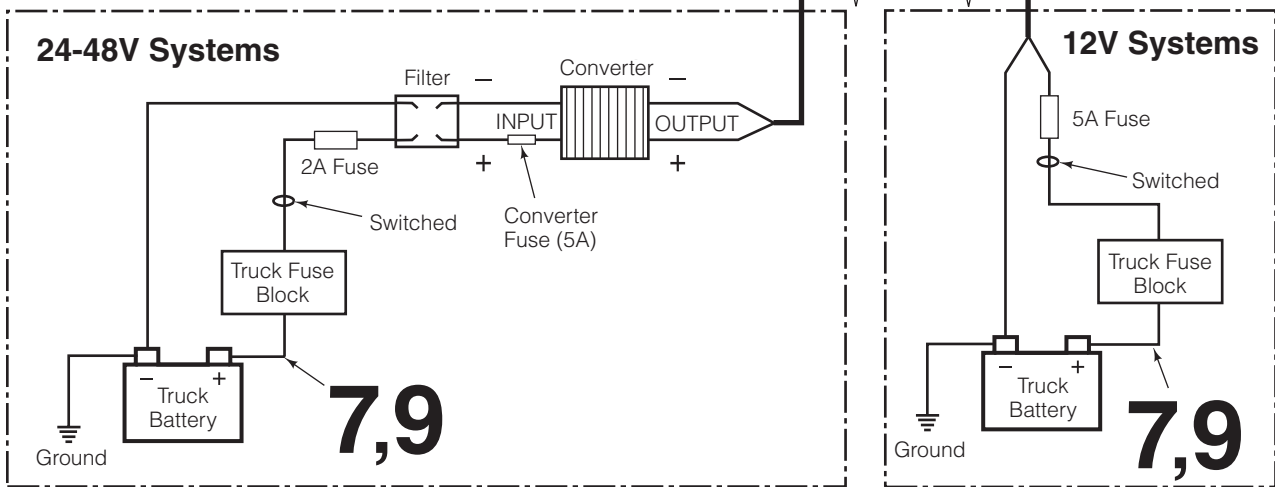
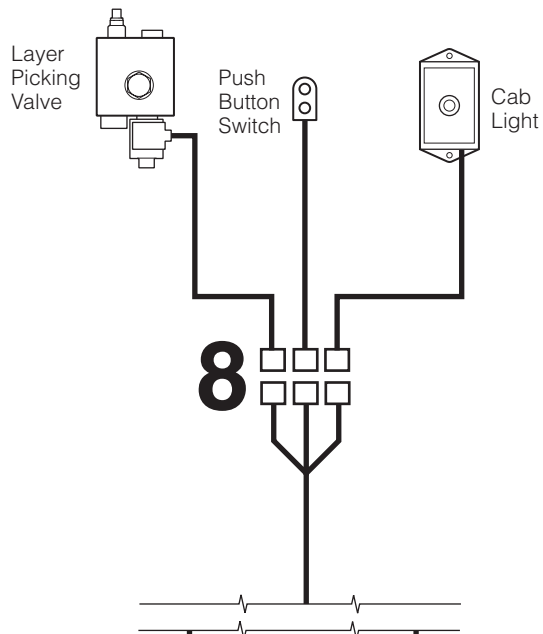
**24V-48V Systems** – Connect the fused positive wire from the cable harness to a DC-to-DC converter positive output wire and the ground wire to the converter negative output wire. Connect converter inputs to the voltage filter outputs. Connect a 24V-48V switched power source to the voltage filter input wire and connect the filter input ground wire to a chassis ground.

Check the cable routing for pinch points and clearance. Use wire ties as needed.

**NOTE: When installing on electric trucks, voltage filter 6061953 must be installed. Failure to install voltage filter can cause damage to electrical components.**

- 8 Connect the cable ends.

- 9 Reconnect the positive battery cable to the battery.

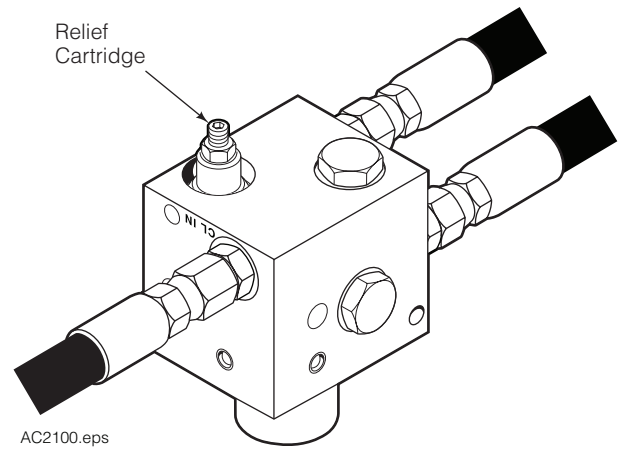


**IC Trucks** – Use chassis ground  
**Electric Trucks** – Use battery ground

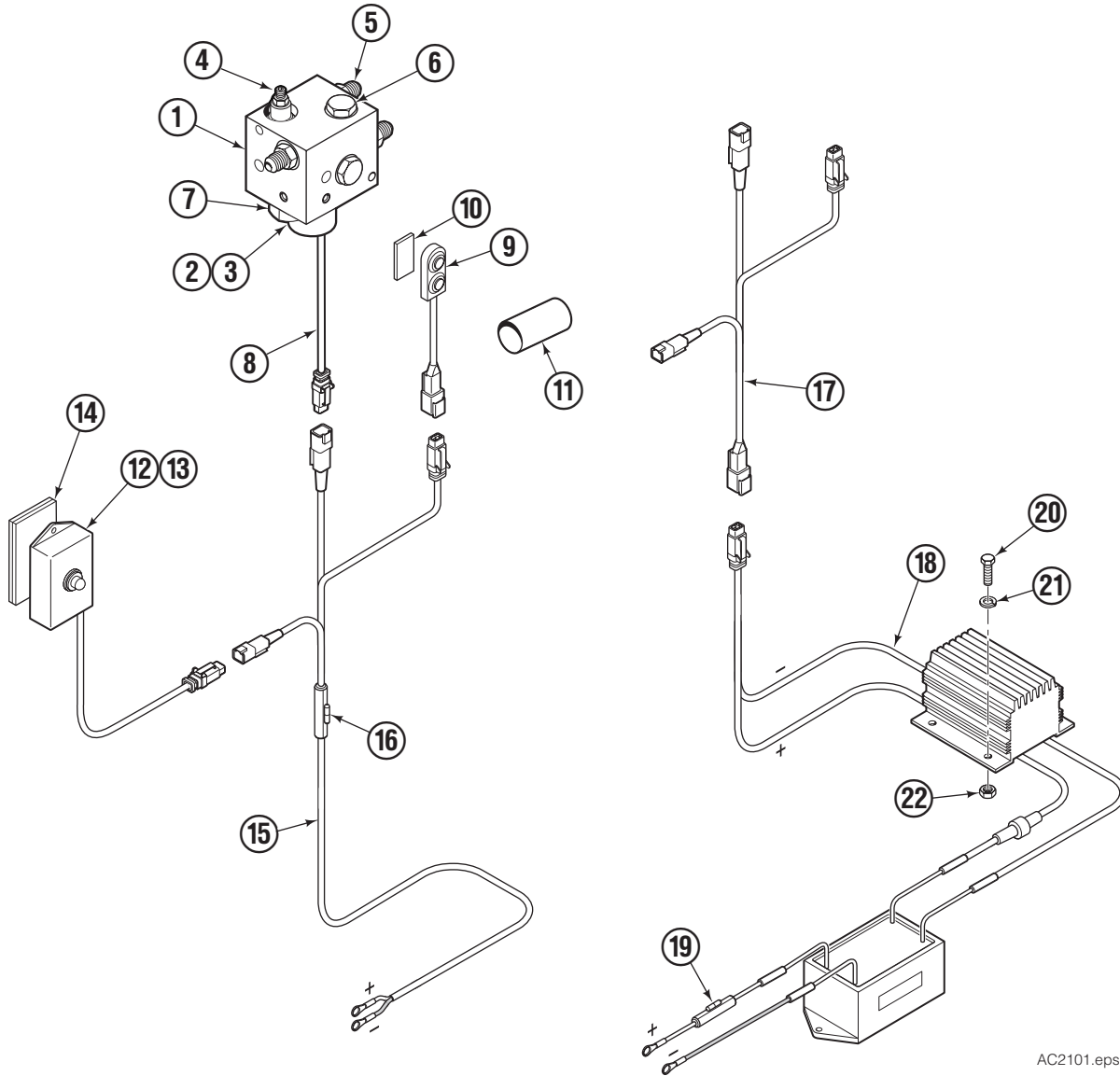
## CARTRIDGE VALVE ADJUSTMENT

To set relief cartridge, install a pressure gauge in the attachment valve test port.

- 1** Press the push button to turn the solenoid valve 'ON' and clamp a single layer test load. Loosen the jam nut on the relief cartridge. Adjust the relief cartridge inward (CW) to raise pressure or outward (CCW) to lower the pressure.
- 2** Press the pushbutton 'ON' to clamp a single layer load. While clamping a layer, check gauge pressure. Readjust the cartridge as required. Tighten jam nut.



# Parts – Light Load Kits



AC2101.eps

REF	QTY	PART NO.	DESCRIPTION	REF	QTY	PART NO.	DESCRIPTION
		6818186	Light Load Kit – 12V ◆	11	1	6001641	Shrink Tubing, 1 in. (25 mm) ▼
		6818287	Light Load Kit – 24V-48V ▲	12	1	6818194	Cab Light
1	1	6818108	Valve Body ■	13	1	6004131	Lamp, Blue
2	1	6097082	Solenoid Cartridge ■	14	1	6029665	Velcro
3	1	6014287	Coil – 12V ■	15	1	6806865	Power Wire Harness, 12V
4	1	6026853	Relief Cartridge ■	16	1	6806708	Fuse, 5A
5	3	601377	Fitting, 8-8 ■	17	1	6816503	Power Wire Harness, 24V-48V
6	2	6018248	Check Cartridge ■	18	1	6816341	Voltage Converter Kit
7	1	6030805	Flow Control Cartridge ■	19	1	680670	Fuse, 2A ★
8	1	6008301	Solenoid Wire Harness	20	4	762900	Capscrew, M6 x 25 ★
9	1	6817983	Switch Assembly ▼	21	4	206323	Lockwasher ★
10	1	6014987	Adhesive Tape ▼	22	4	765718	Nut, M6 ★

◆ Items 1-16.

▲ Items 1-14 and 17-22.

■ Included in Valve Assembly 6818109.

▼ Included in Switch Kit 6818190.

★ Included in Voltage Converter Kit 6816341.