

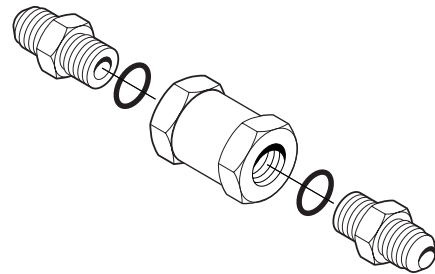


Installation Instruction

High-Pressure Hydraulic Filter Fitting Kit 6049964

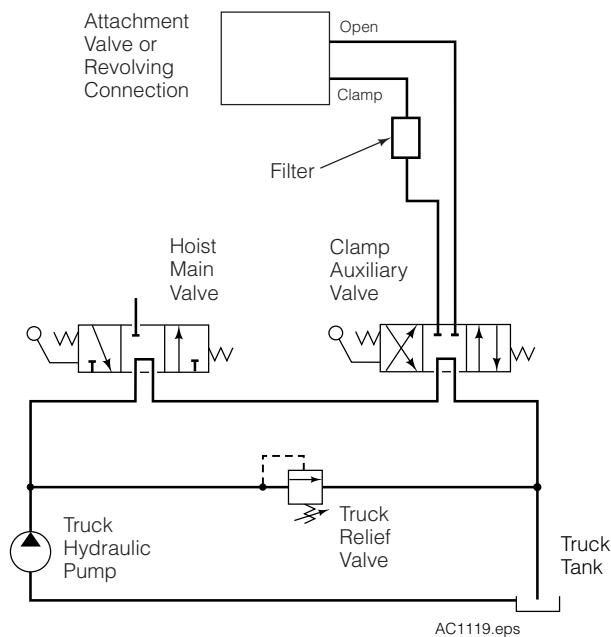
This sheet provides installation instructions and replacement parts list for Cascade Filter Fitting Kit 6049964. The Filter provides protection for contamination in the hydraulic circuit down to 120 micron (.006 in.). The internal cartridge is replaceable and should be checked every time attachment maintenance is performed or if clamp performance/arm speed change.

- 1 Determine a location to install the filter. Install the filter in the clamp circuit between the clamp auxiliary valve and the clamp port on the attachment valve or proportional pressure valve.
- 2 Assemble the filter with the appropriate size fittings for your circuit hoses.

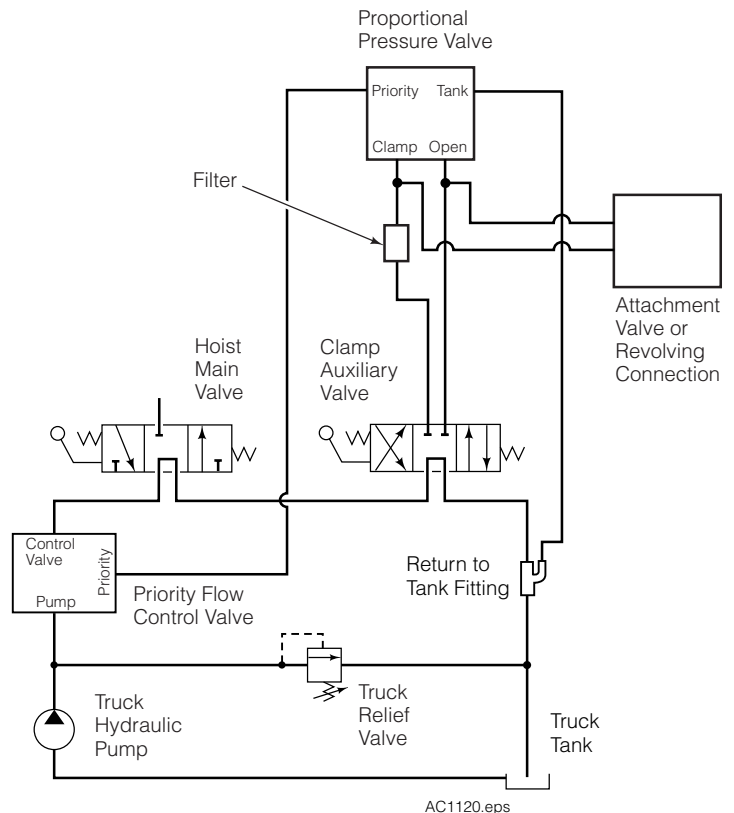


AC1072.eps

Clamp Attachments



Attachments Equipped with Adaptive Force Control



NOTE: This information should not be interpreted as the basis for warranty claims unless so designated.

cascade[®]
corporation

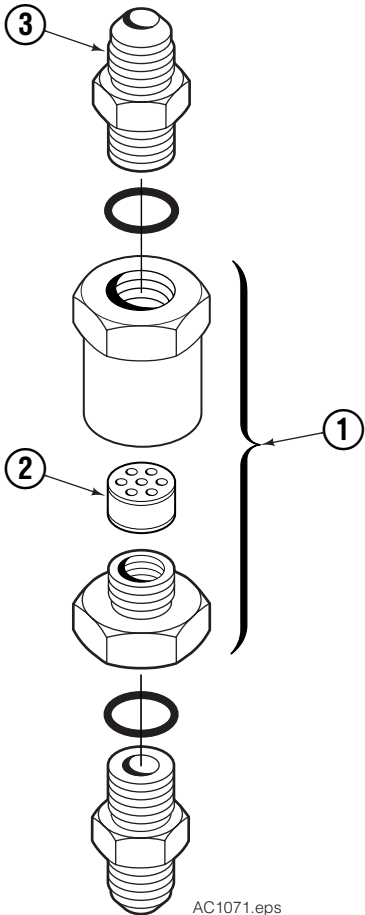
For Technical Support . . .

Call: 1-800-227-2233 Fax: 1-888-329-8207
Internet: www.cascorp.com
Write: Cascade Corporation, PO Box 20187, Portland, OR 97294

To Order Parts . . .

Call: 1-888-227-2233 Fax: 1-888-329-0234
Internet: www.cascorp.com
Write: Cascade Corporation, 2501 Sheridan Ave., Springfield, OH 45505

Parts List



REF	QTY	PART NO.	DESCRIPTION
		6049964	Hydraulic Filter Kit
1	1	6049389	Filter Fitting
2	1	6048949	Cartridge
3	2	611288	Fitting, 6-8
3	2	601377	Fitting, 8-8