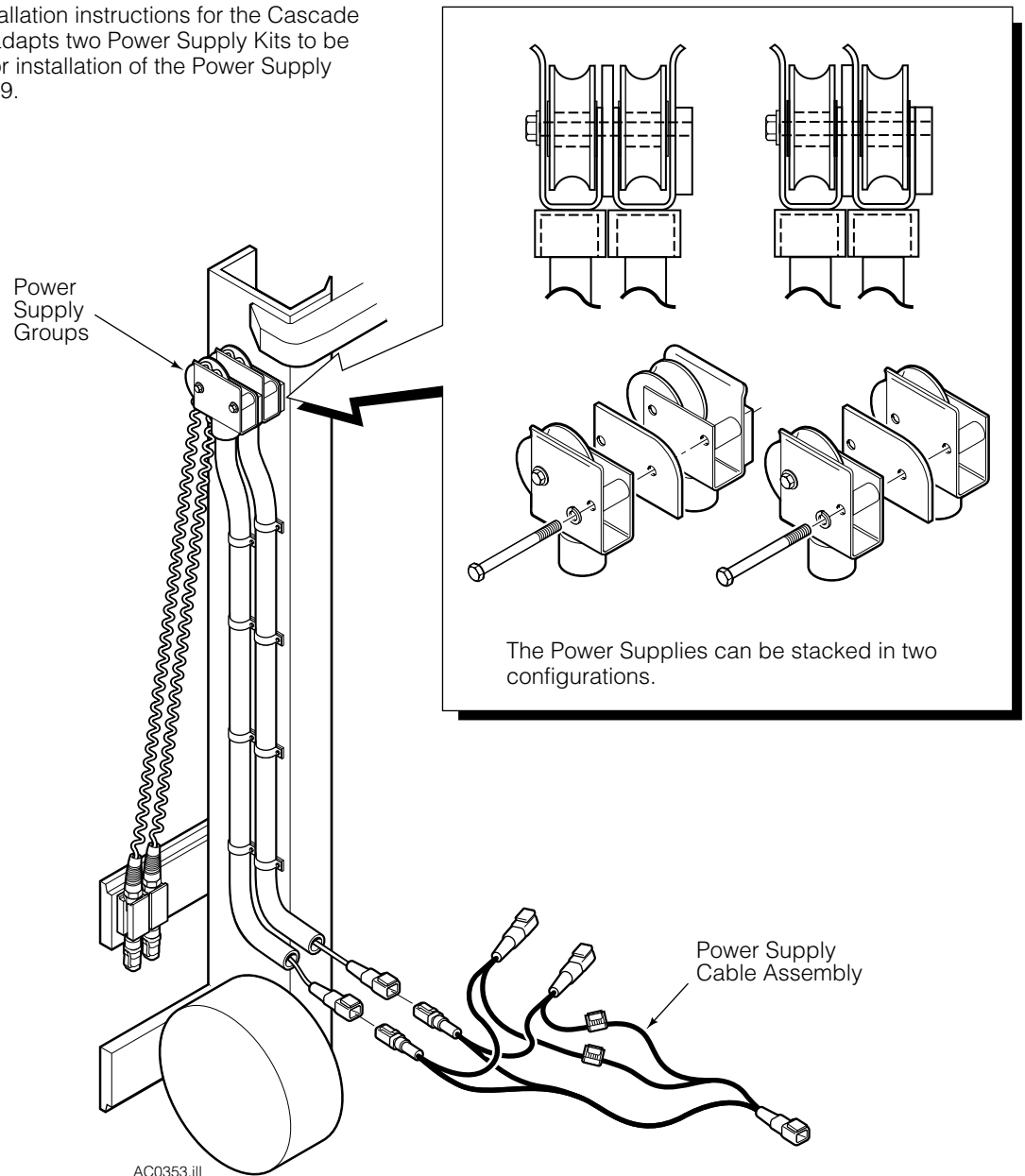




Installation Instructions

Stack Mounting Kit 6011619 for Power Supply Groups

This manual provides installation instructions for the Cascade Stack Mount Kit. The kit adapts two Power Supply Kits to be mounted side by side. For installation of the Power Supply Kits see Instruction 228179.



Part No. 6011618

cascade[®]

For Technical Support . . .

Call: 1-800-227-2233

OR

Write: Cascade Corporation, P.O. Box 20187, Portland, OR 97294

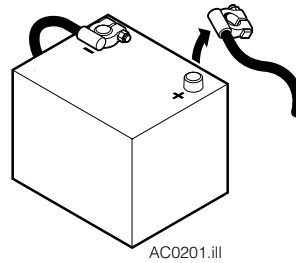
To Order Parts . . .

Call: 1-888-227-2233

OR

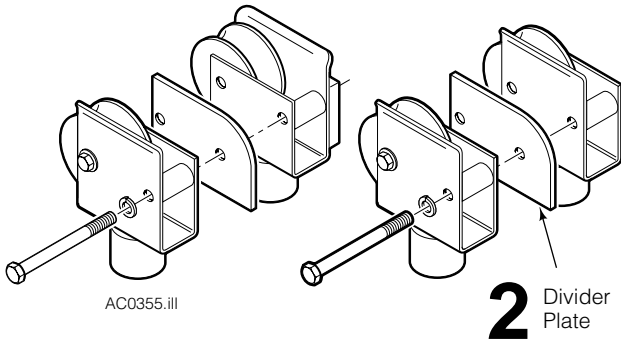
Write: Cascade Corporation, 2501 Sheridan Ave., Springfield, OH 45505

1 Disconnect the cable from the positive battery terminal.

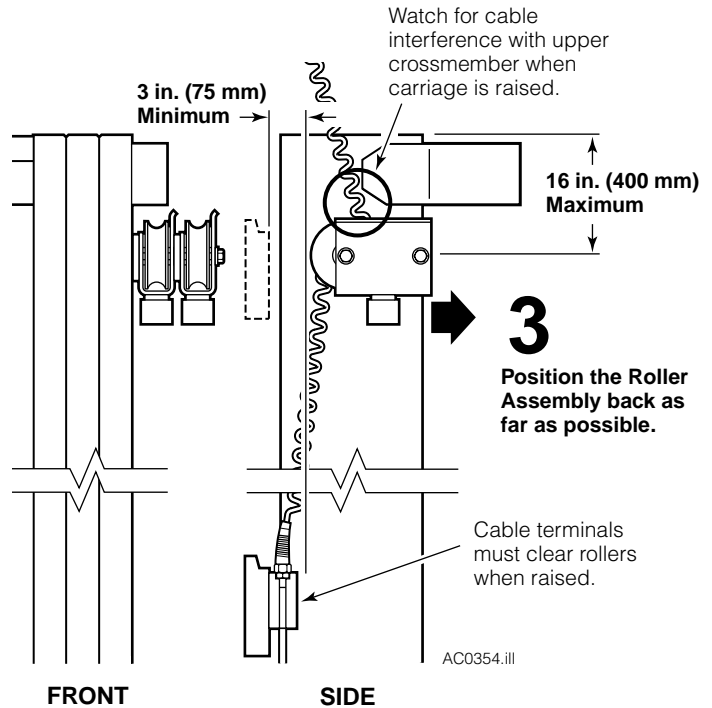


1 Remove cable from positive battery terminal

2 Assemble the roller assemblies with the divider plate.

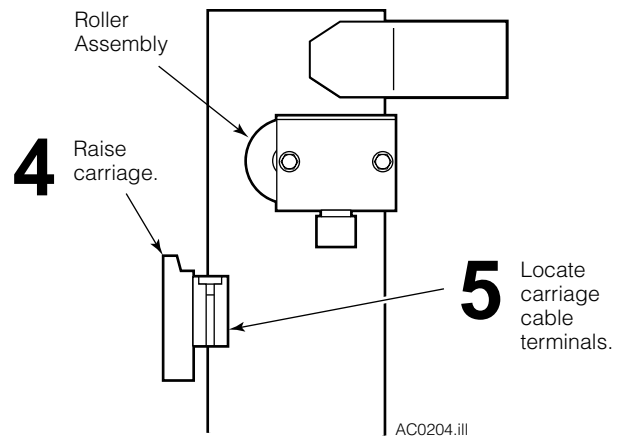
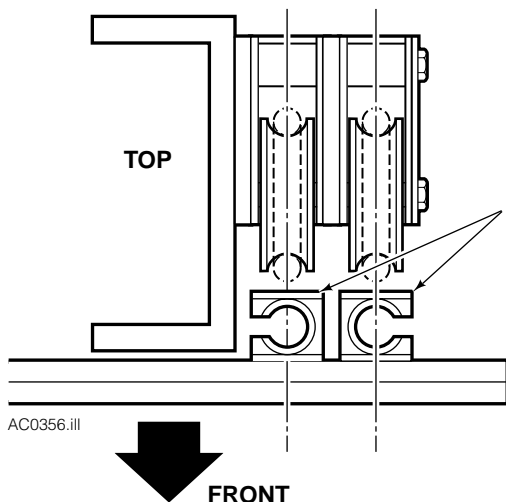


3 Determine a mounting location for the roller assembly on the mast upper outer rail. Locate the roller assembly as far back as possible watching for clearance problems with the upper crossmember. The cable terminals must clear the roller assembly when the carriage is raised.



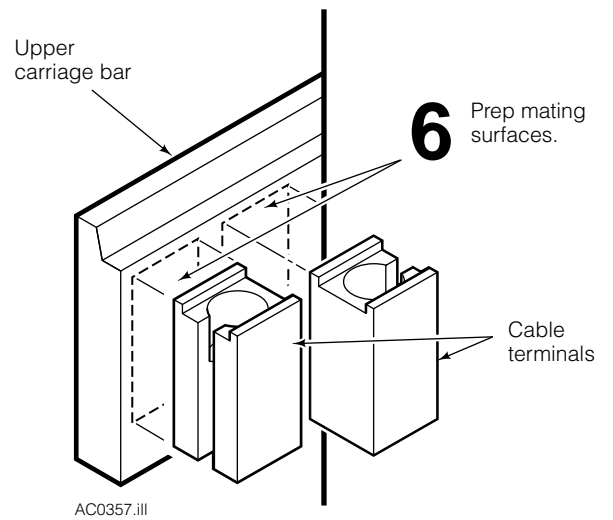
4 Raise and position the upper carriage bar just below the roller assembly.

5 Locate and mark a mounting location for the carriage cable terminals on the back side of the upper carriage bar. Center the cable terminals with the roller assembly rollers.

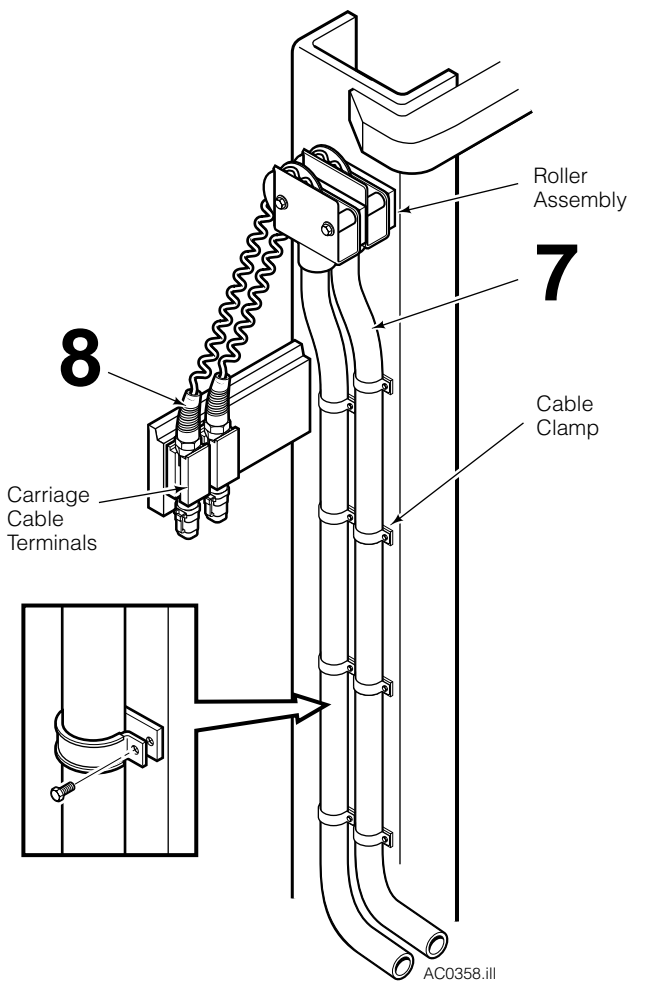


2

- 6** Glue the cable terminals to the carriage. Check alignment with the rollers.



- 7** Install the roller assembly, cables and cable clamps.

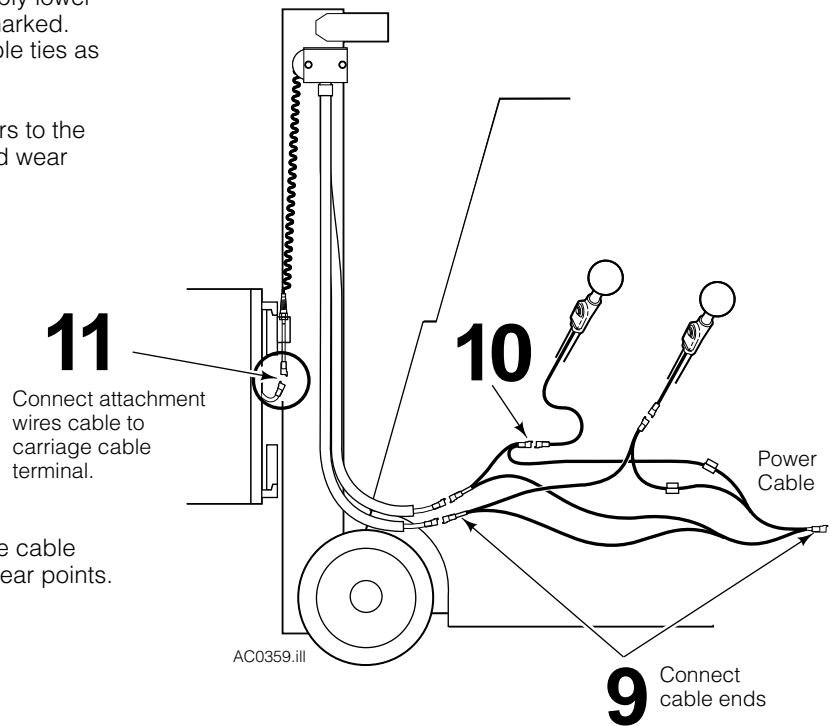


- 8** Connect the cable ends to the carriage cable terminals.

9 Connect the power cables to the power supply lower cable end connectors and truck power as marked. Watch for pinch and wear points. Install cable ties as needed.

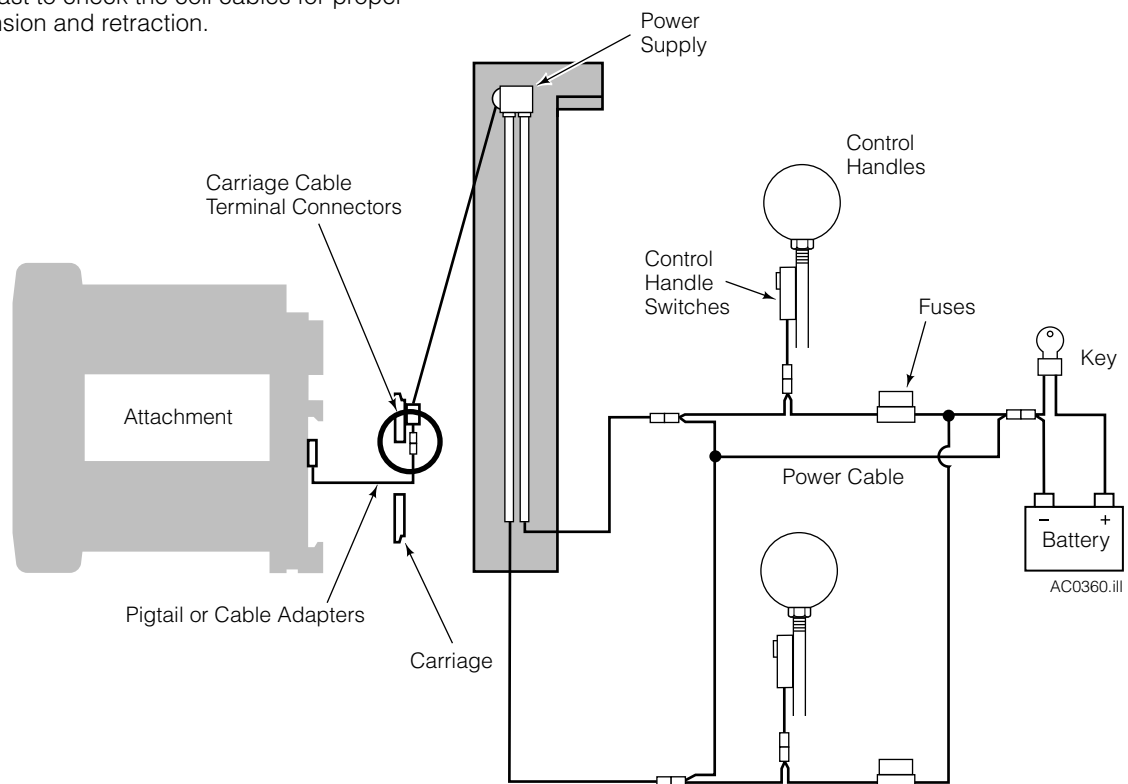
10 Connect the control handle switch connectors to the power cable connector. Watch for pinch and wear points. Install cable ties as needed.

11 Connect the attachment wires to the carriage cable terminal connectors. Watch for pinch and wear points. Install cable ties as needed.

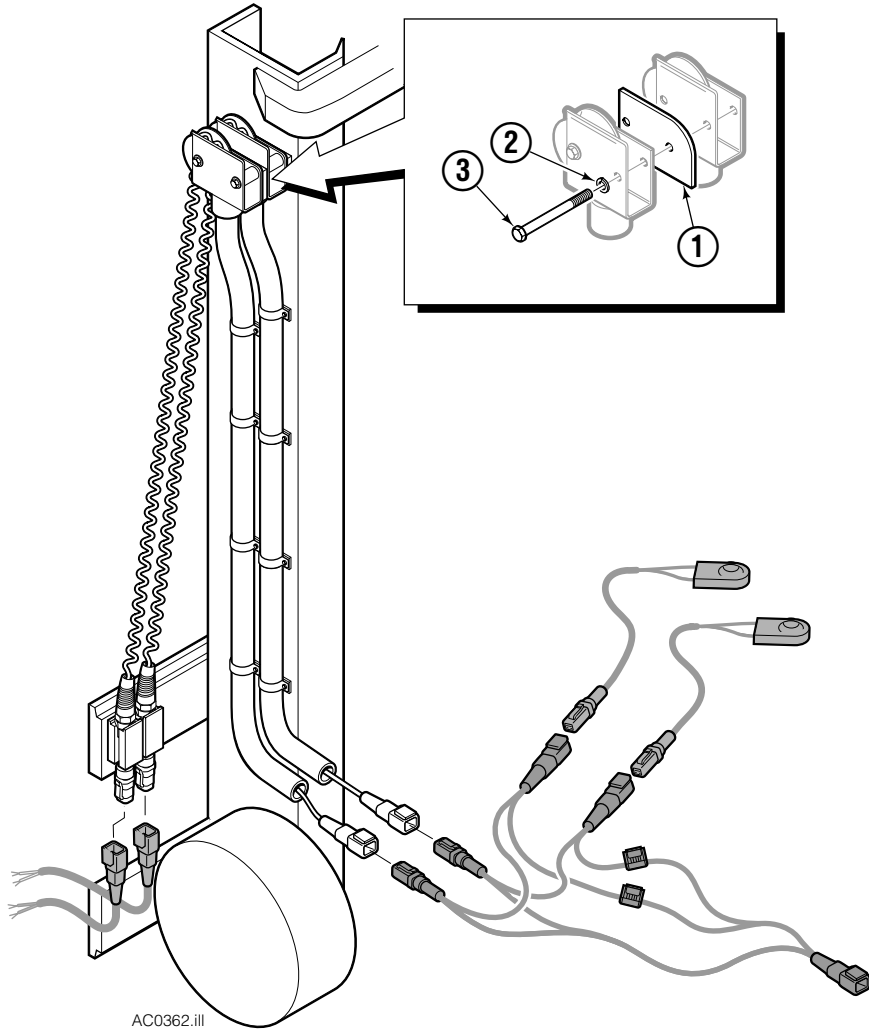


12 Connect the battery cable to the positive terminal.

13 Test the electrical functions for proper operation. Raise and lower the mast to check the coil cables for proper alignment, extension and retraction.



Stack Mount Kit



| REF | QTY | PART NO. | DESCRIPTION |
|-----|-----|----------|--------------------|
| | | 6011619 | Stack Mounting Kit |
| 1 | 1 | 6011620 | Divider Plate |
| 2 | 2 | 206315 | Lockwasher, M8 |
| 3 | 2 | 200871 | Capscrew, M8 |

Do you have questions you need answered right now? Call your nearest Cascade Service Department.

**Cascade Corporation
U.S. Headquarters**
2201 NE 201st
Fairview, OR 97024-9718
Tel: 800-CASCADE (227-2233)
FAX: 888-329-8207

Cascade Canada Inc.
5570 Timberlea Blvd.
Mississauga, Ontario
Canada L4W-4M6
Tel: 905-629-7777
FAX: 905-629-7785

Cascade GmbH
D-41199 Monchengladbach
Klosterhofweg 52
Germany
Tel: 21-66-602091
FAX: 21-66-680947

Cascade Finland
01370 Vantas
Finland
Tel: 358-0-836-1925
FAX: 358-0-836-1935

**Cascade N.V.
European Headquarters**
P.O. Box 3009
1300 El Almere
Damsluisweg 56
1332 ED Almere
The Netherlands
Tel: 31-36-5492911
FAX: 31-36-5492964

**Cascade N.V.
Benelux Sales and Service**
P.O. Box 3009
1300 El Almere
Damsluisweg 56
1332 ED Almere
The Netherlands
Tel: 31-36-5492950
FAX: 31-36-5492974

Cascade (UK) Ltd.
15, Orgreave Crescent
Dore House Industrial Estate
Handsworth
Sheffield S13 9NQ
England
Tel: 742-697524
FAX: 742-695121

**Cascade Scandinavia
Hydraulik A.B.**
Muskötgatan 19, E8-9
S25466 Helsingborg
Sweden
Tel: 42-151135
FAX: 42-152997

Cascade Norway
Østerliveien 37A
1153 Oslo
Norway
Tel: 47-22-743160
FAX: 47-22-743157

Cascade France S.A.R.L.
11, Rue Jean Charcot
Zone Industrielle Sud or
B.P. 22
91421 Morangis Cedex
France
Tel: 1- 64547501
FAX: 1-9790584

Cascade Hispania S.A.
Avenida De La Fabregada, 7
Hospitalet De Llobregat
Barcelona
Spain
Tel: 3-335-5158
FAX: 3-335-4756

Cascade Japan Ltd.
5-5-41,
Torikai Kami
Settsu, Osaka
Japan, 566
Tel: 81-726-53-3490
FAX: 81-726-53-3497

Cascade Korea
Room 508, Pum Yang Bldg.
750-14, Bang Bac-Dong
Se-Cho Ku, Seoul
Korea
Tel: 2599-7131 ext. 512
FAX: 2533-8089

HYCO-Cascade Pty. Ltd.
87 Antimony Street
Carole Park,
Brisbane 4300
Australia
Tel: 7-271-1966
FAX: 7-271-3830

HYCO-Cascade (NZ) Ltd.
15 Ra Ora Drive, East Tamaki
P.O. Box 38-440
Howick, Auckland
New Zealand
Tel: 9-273-9136
FAX: 9-273-9137

Cascade (Africa) Pty. Ltd.
P.O. Box 625, Isando 1600
60A Steel Road
Sparton, Kempton Park
South Africa
Tel: 975-9240
FAX: 394-1147

Cascade-Xiamen
Wanshan No. 1 Workshop
Huli Road
Xiamen 361006
Fujian, PRC
Tel: 592-562-4600
FAX: 592-562-4671

**Cascade (Singapore)
Trading Co.**
Four Seasons Park
Autumn Block - Apt. 1802
12 Cascaden Walk
Singapore
Tel: 65-834-1935
FAX: 65-834-1936

