



# Installation Instructions & Operators Guide

## Wireless Pressure Monitor Kits

This sheet provides instruction on installing Cascade Wireless Pressure Monitor Kit. This kit consists of a transmitter, display assembly, pressure transducer(s) and batteries. The transmitter receives data from the pressure transducer(s) and sends the data wirelessly to the display. The display shows the average pressure.

### One Pressure Transducer

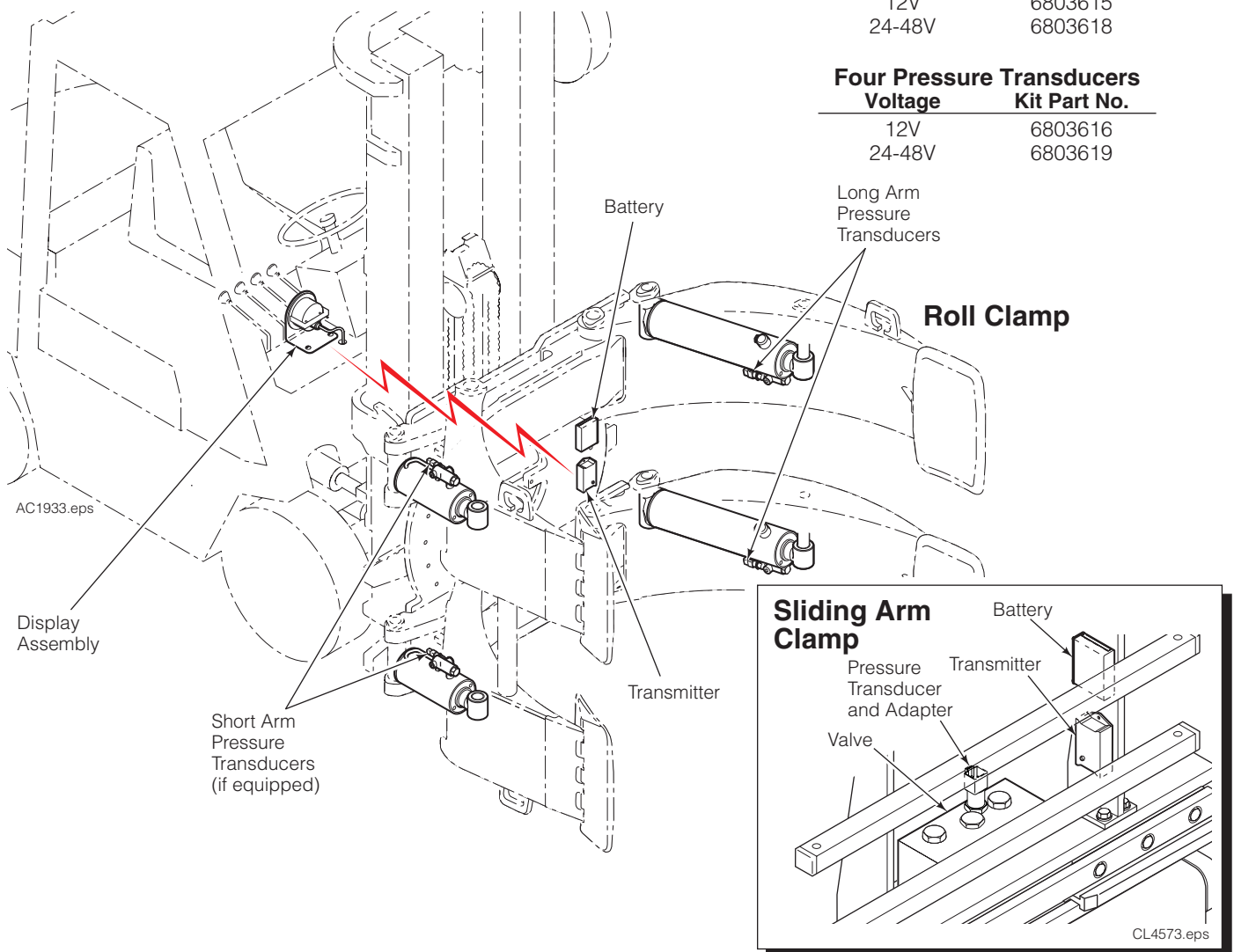
Voltage	Kit Part No.
12V	6803614
24-48V	6803617

### Two Pressure Transducers

Voltage	Kit Part No.
12V	6803615
24-48V	6803618

### Four Pressure Transducers

Voltage	Kit Part No.
12V	6803616
24-48V	6803619



**cascade**<sup>®</sup>  
**corporation**

#### For Technical Support . . .

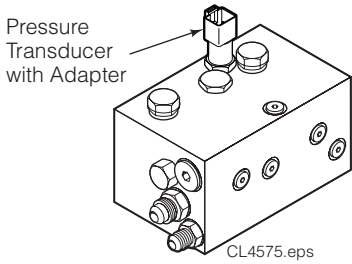
Call: 1-800-227-2233 Fax: 1-888-329-8207  
Internet: [www.cascorp.com](http://www.cascorp.com)  
Write: Cascade Corporation, PO Box 20187, Portland, OR 97294

#### To Order Parts . . .

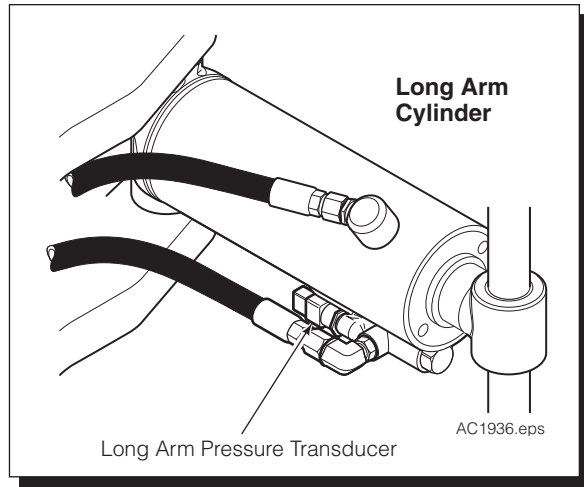
Call: 1-888-227-2233 Fax: 1-888-329-0234  
Internet: [www.cascorp.com](http://www.cascorp.com)  
Write: Cascade Corporation, 2501 Sheridan Ave., Springfield, OH 45505

# Installation

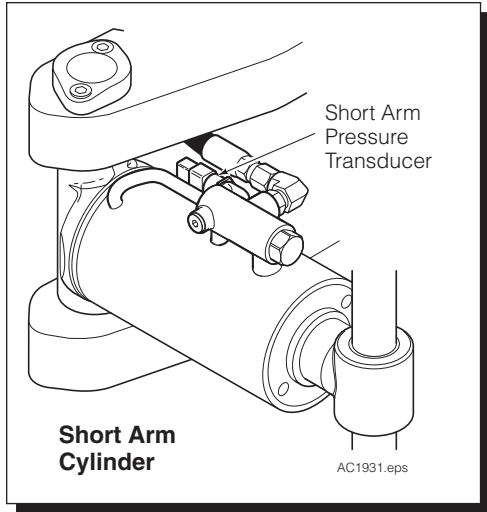
- 1 Disconnect cable from truck positive battery terminal.
- 2 Install pressure transducer(s) in one of the following locations:
  - **Roll Clamps with Fixed Short Arm** – Install PT1 and PT2 in the long arm cylinders.
  - **Roll Clamps with Both Arms Powered** – Install PT1 and PT2 in the long arm cylinders and PT3 and PT4 in the short arm cylinders.
  - **Sliding Arm Clamps** – Install adapter fitting (if required) and PT1 in the valve gauge port.



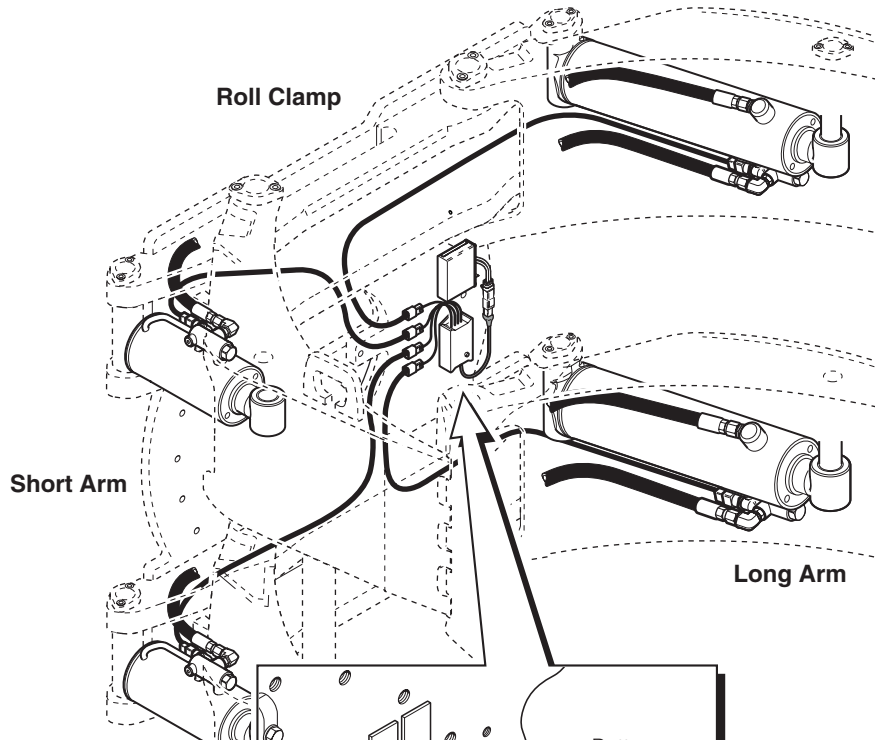
**Sliding Arm Clamp Valve**



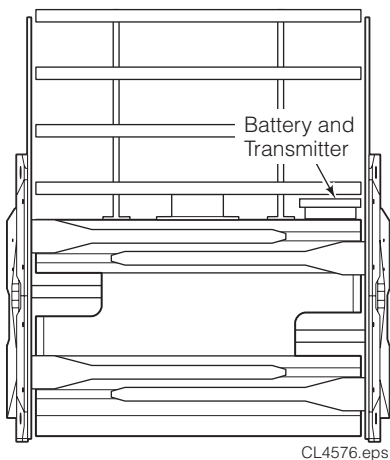
**Long Arm Cylinder**



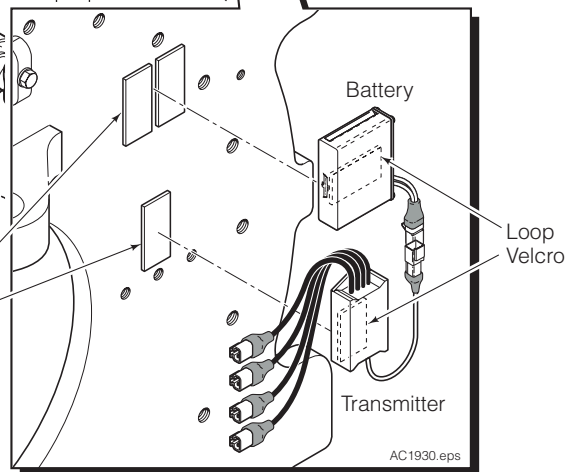
**Short Arm Cylinder**



- 3 Install hook velcro on the attachment in a convenient location such as the roll clamp faceplate or top of sliding arm clamp frame or backrest. Install loop velcro to component backs. Attach the components to the attachment. Check for pinch points and interference that could harm the components.



**Sliding Arm Clamp**



Hook Velcro

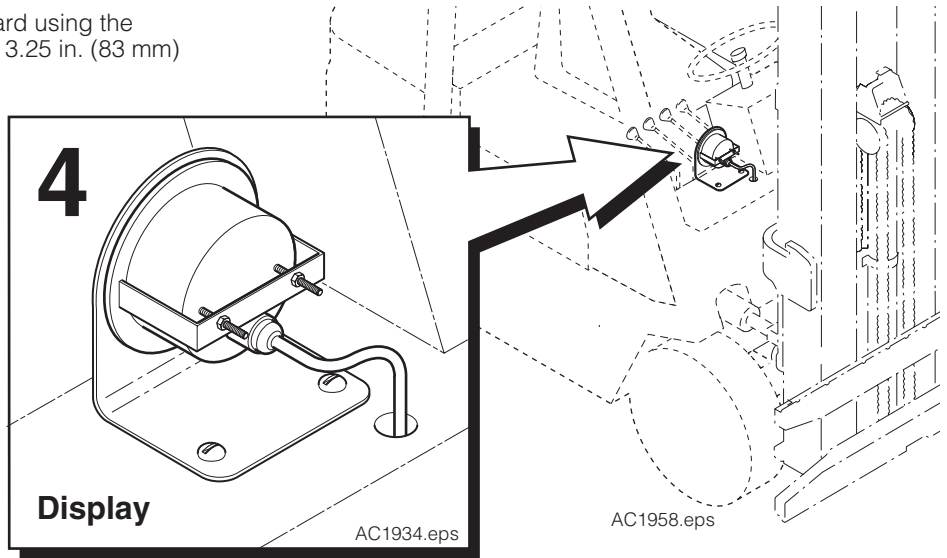
Battery

Loop Velcro

Transmitter

AC1930.eps

- 4 Mount the display on the truck dashboard using the provided mounting bracket or cutting a 3.25 in. (83 mm) hole for a flush mount.



- 5 Connect the cables between the battery, pressure transducer(s) and transmitter connector(s).
- 6 Connect the display assembly cable ends and wire as shown below.

**NOTE:** To directly wire the display assembly to a truck power source, cut the connector end off and wire as shown below.

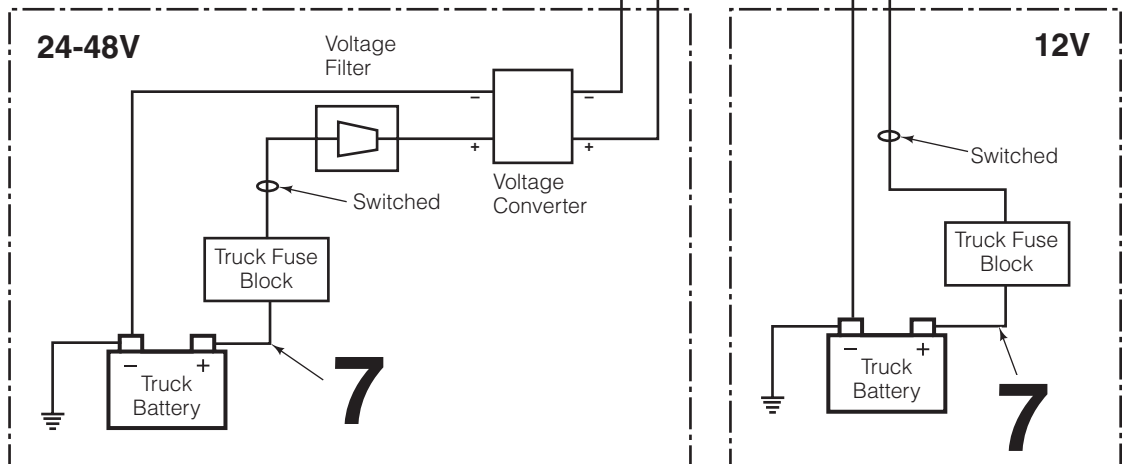
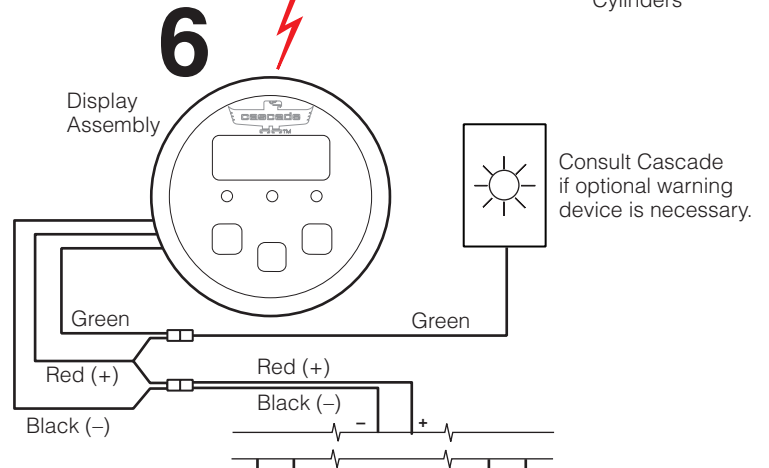
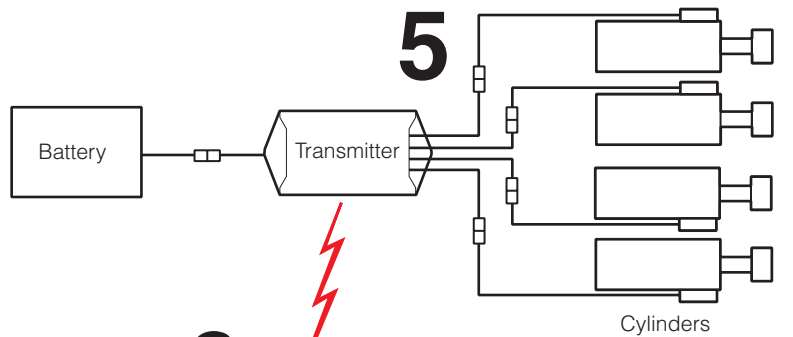
**12V Trucks** – Connect the red wire (+) to a 12V switched power source. Connect the common black wire (-) to ground.

**24V-48V Trucks** – Connect the red wire (+) to the voltage converter supplied. Connect the voltage converter to the voltage filter. Connect the voltage filter to a switch power source. Connect the common black wire (-) to battery ground.

**NOTE: When installing on electric trucks with regenerative braking, voltage filter 6061953 must be installed. Failure to install voltage filter can cause damage to electrical components**

Check the cable routing for pinch points and clearance. Use wire ties as needed.

- 7 Reconnect the positive battery cable to the battery.



## Operation

**PSI or Bar** – The display shows the pressure in PSI or Bar. The LED indicates which unit is selected. To switch unit, touch "ENTER" button two times within three seconds. Wait for the units to change.

**Normal Mode** – During clamping operation, the display will show the average of PT1 and PT2. The middle LED will be illuminated.

The display will flash whenever the average pressure at PT1 and PT2 changes more than a predetermined percentage from peak pressure. This mode will reset when the average pressure value drops under 400 psi.

**NOTE:** A new peak pressure value is set when the average goes above the the previous peak.

**Discrete Mode** – To view each of the four pressure transducer values on the display, touch the "ENTER" button four times in less than three seconds and wait for the mode to be in effect. Use the arrow buttons to view each pressure transducer value:

- PT1 – All LEDs flash one time for every 2 seconds.
- PT2 – All LEDs flash two times for every 2 seconds.
- PT3 – All LEDs flash three times for every 2 seconds.
- PT4 – All LEDs flash four times for every 2 seconds.

**NOTE:** If a pressure transducer is not installed, the value will show "0".

**NOTE:** To return to Normal Mode:

- Touch the "ENTER" button three times in less than three seconds and wait for the mode to be in effect, **OR**
- Do not touch any buttons for 10 minutes, **OR**
- Power cycle the display.

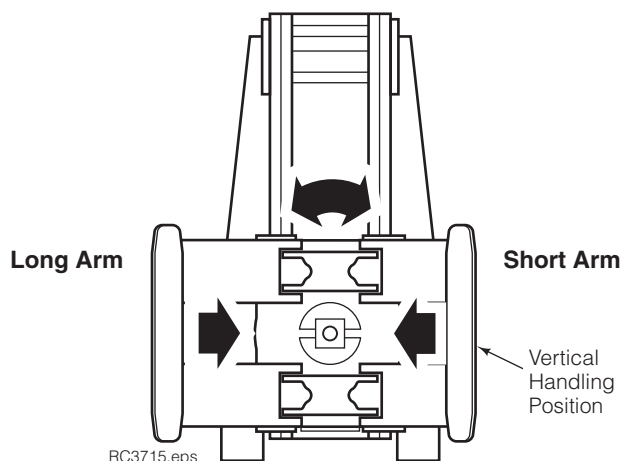
## Effects of Rotating Roll Clamps

The pressure displayed during rotation will change depending on arm location. This is normal.

**Vertical to Short Arm Down** – When clamping vertical and then rotated to short arm down (bilge), the pressure displayed will decrease. The pressure will increase when the clamp is rotated back to vertical.

**Vertical to Long Arm Down (Do not carry rolls with long arm down)** – When clamping vertical and then rotated so the long arm is down, the pressure will increase. The pressure will decrease when the clamp is rotated back to vertical.

**Bilge to Vertical** – When clamping in bilge, roll hoisted and then rotated to vertical, the pressure displayed will decrease. Prior to rotation, reclamp the load to achieve proper clamp force. Adjust hydraulic clamp pressure as necessary for secure handling.



## Battery

The battery life will last for 40 hours.

- The LEDs will flash if the battery is low.
- The display will flash "batt" if the battery is about to die.
- The display will flash "- - -" when there is no battery power or transmitter signal. Recharge the transmitter battery.

## Pressure Drop Indicator

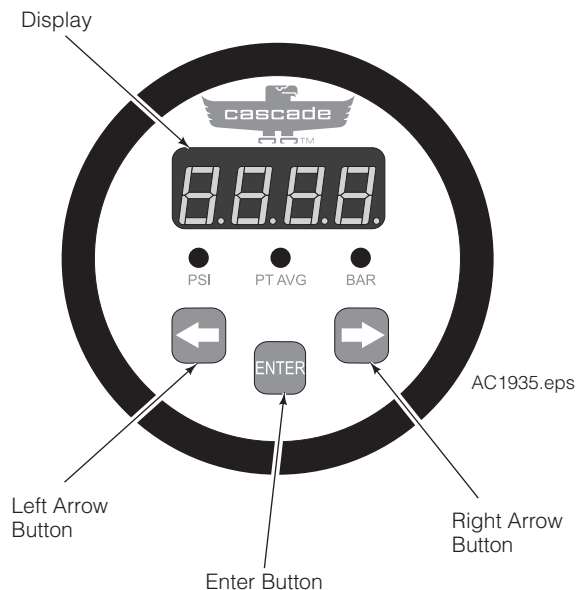
**Percentage of Peak Pressure** – To change the percentage of peak pressure, touch the "ENTER" button for **five** seconds. Use the arrow pads to change the value in 1% steps with a range of 2% – 25%. The default is set to 7%. Touch the "ENTER" button to save the value and to exit the this menu.

## Synchronizing

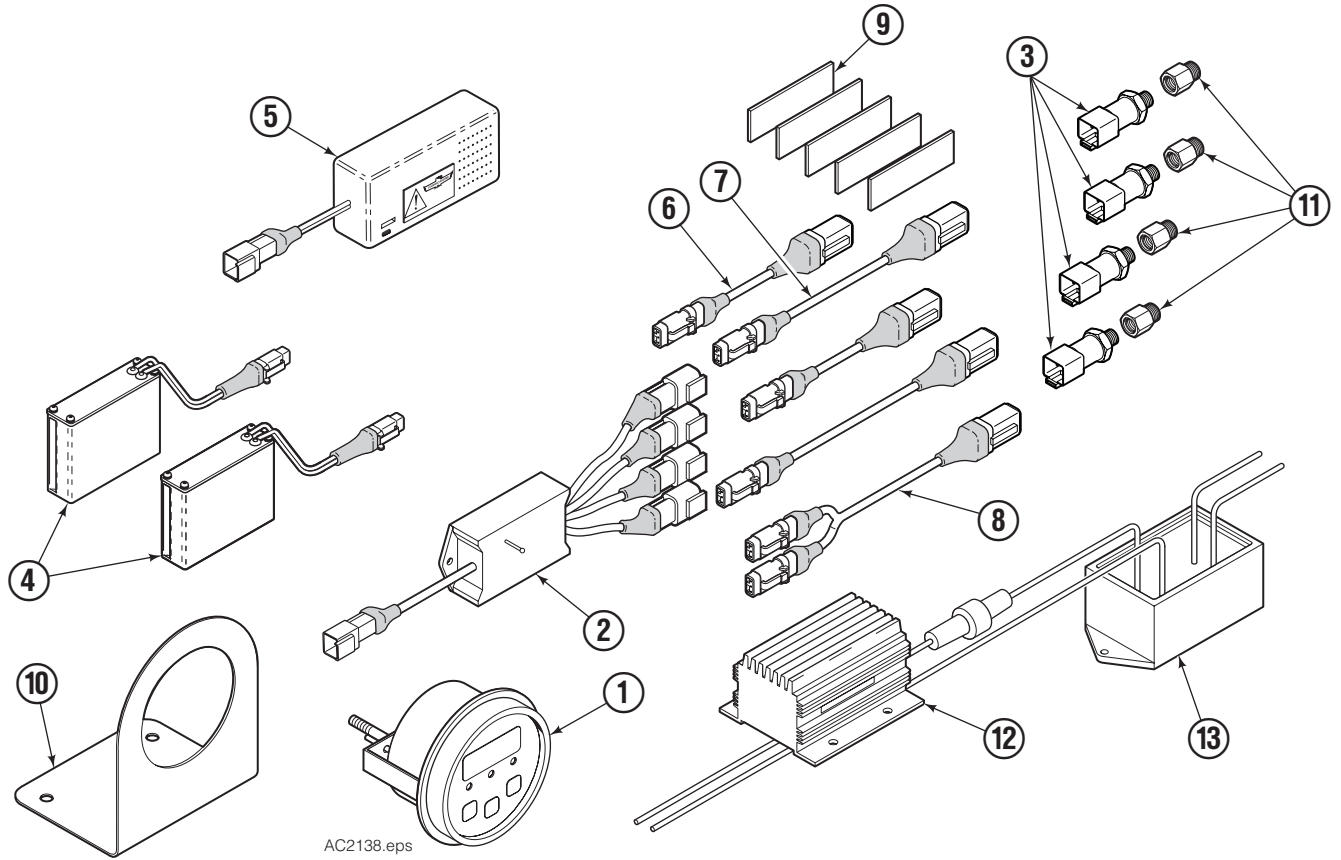
**IMPORTANT:** The receiver (display assembly) and the transmitter have been synchronized at the factory. If the receiver or transmitter is replace, do the following steps:

- 1 Turn the truck on to power the display assembly on. Press the right arrow button six times within five seconds of powering on. The display should show "LERN".
- 2 Power on the transmitter to finalize the synchronization, by connecting the battery to the transmitter.

### Display Assembly



# Wireless Pressure Monitor Kits



AC2138.eps

REF	QTY	12V			24-48V			DESCRIPTION
		1 PT	2 PT	4 PT	1 PT	2 PT	4 PT	
		6803614	3803615	3803616	6803617	6803618	6803619	Wireless Pressure Monitor Kit
1	1	6803761	6803761	6803761	6803761	6803761	6803761	● Wireless Pressure Display
2	1	6803762	6803762	6803762	6803762	6803762	6803762	● Transmitter
3	1	6091233	-	-	6091233	-	-	Pressure Transducer
	2	-	6091233	-	-	6091233	-	Pressure Transducer
	4	-	-	6091233	-	-	6091233	Pressure Transducer
4	2	6075736	6075736	6075736	6075736	6075736	6075736	Battery
5	1	6079239	6079239	6079239	6079239	6079239	6079239	Lithium Ion Charger
6	1	-	6803621	-	-	6803621	-	Cable Assembly
	2	-	-	6803621	-	-	6803621	Cable Assembly
7	1	-	6803623	-	-	6803623	-	Cable Assembly
	2	-	-	6803623	-	-	6803623	Cable Assembly
8	1	6804138	-	-	6804138	-	-	Cable Assembly
9	5	6029665	6029665	6029665	6029665	6029665	6029665	Velcro
10	1	6805222	6805222	6805222	6805222	6805222	6805222	Bracket
11	1	629789	-	-	629789	-	-	Adapter Fitting, 6-4
	2	-	629789	-	-	629789	-	Adapter Fitting, 6-4
	4	-	-	629789	-	-	629789	Adapter Fitting, 6-4
12	1	-	-	-	6064659	6064659	6064659	◆ Voltage Converter, 24-48V → 12V
13	1	-	-	-	6061953	6061953	6061953	◆ Voltage Filter

● Included in Wireless Pressure Monitor Group 6803620.

◆ Included in Voltage Converter & Filter Kit 217932.

**Do you have questions you need answered right now?**

Call your nearest Cascade Service Department.

Visit us online at [www.cascorp.com](http://www.cascorp.com)

**AMERICAS**

**Cascade Corporation  
U.S. Headquarters**

2201 NE 201st  
Fairview, OR 97024-9718  
Tel: 800-CASCADE (227-2233)  
Fax: 888-329-8207

**Cascade Canada Inc.**

5570 Timberlea Blvd.  
Mississauga, Ontario  
Canada L4W-4M6  
Tel: 905-629-7777  
Fax: 905-629-7785

**Cascade do Brasil**

Rua João Guerra, 134  
Macuco, Santos - SP  
Brasil 11015-130  
Tel: 55-13-2105-8800  
Fax: 55-13-2105-8899

**EUROPE-AFRICA**

**Cascade Italia S.R.L.  
European Headquarters**

Via Dell'Artigianato 1  
37030 Vago di Lavagno (VR)  
Italy  
Tel: 39-045-8989111  
Fax: 39-045-8989160

**Cascade (Africa) Pty. Ltd.**

PO Box 625, Isando 1600  
60A Steel Road  
Sparton, Kempton Park  
South Africa  
Tel: 27-11-975-9240  
Fax: 27-11-394-1147

**ASIA-PACIFIC**

**Cascade Japan Ltd.**

2-23, 2-Chome,  
Kukuchi Nishimachi  
Amagasaki, Hyogo  
Japan, 661-0978  
Tel: 81-6-6420-9771  
Fax: 81-6-6420-9777

**Cascade Korea**

121B 9L Namdong Ind.  
Complex, 691-8 Gojan-Dong  
Namdong-Ku  
Inchon, Korea  
Tel: +82-32-821-2051  
Fax: +82-32-821-2055

**Cascade-Xiamen**

No. 668 Yangguang Rd.  
Xinyang Industrial Zone  
Haicang, Xiamen City  
Fujian Province  
P.R. China 361026  
Tel: 86-592-651-2500  
Fax: 86-592-651-2571

**Cascade India Material  
Handling Private Limited**

No 34, Global Trade Centre  
1/1 Rambaugh Colony  
Lal Bahadur Shastri Road,  
Navi Peth, Pune 411 030  
(Maharashtra) India  
Phone: +91 020 2432 5490  
Fax: +91 020 2433 0881

**Cascade Australia Pty. Ltd.**

1445 Ipswich Road  
Rocklea, QLD 4107  
Australia  
Tel: 1-800-227-223  
Fax: +61 7 3373-7333

**Cascade New Zealand**

15 Ra Ora Drive  
East Tamaki, Auckland  
New Zealand  
Tel: +64-9-273-9136  
Fax: +64-9-273-9137

**Sunstream Industries  
Pte. Ltd.**

18 Tuas South Street 5  
Singapore 637796  
Tel: +65-6795-7555  
Fax: +65-6863-1368

