



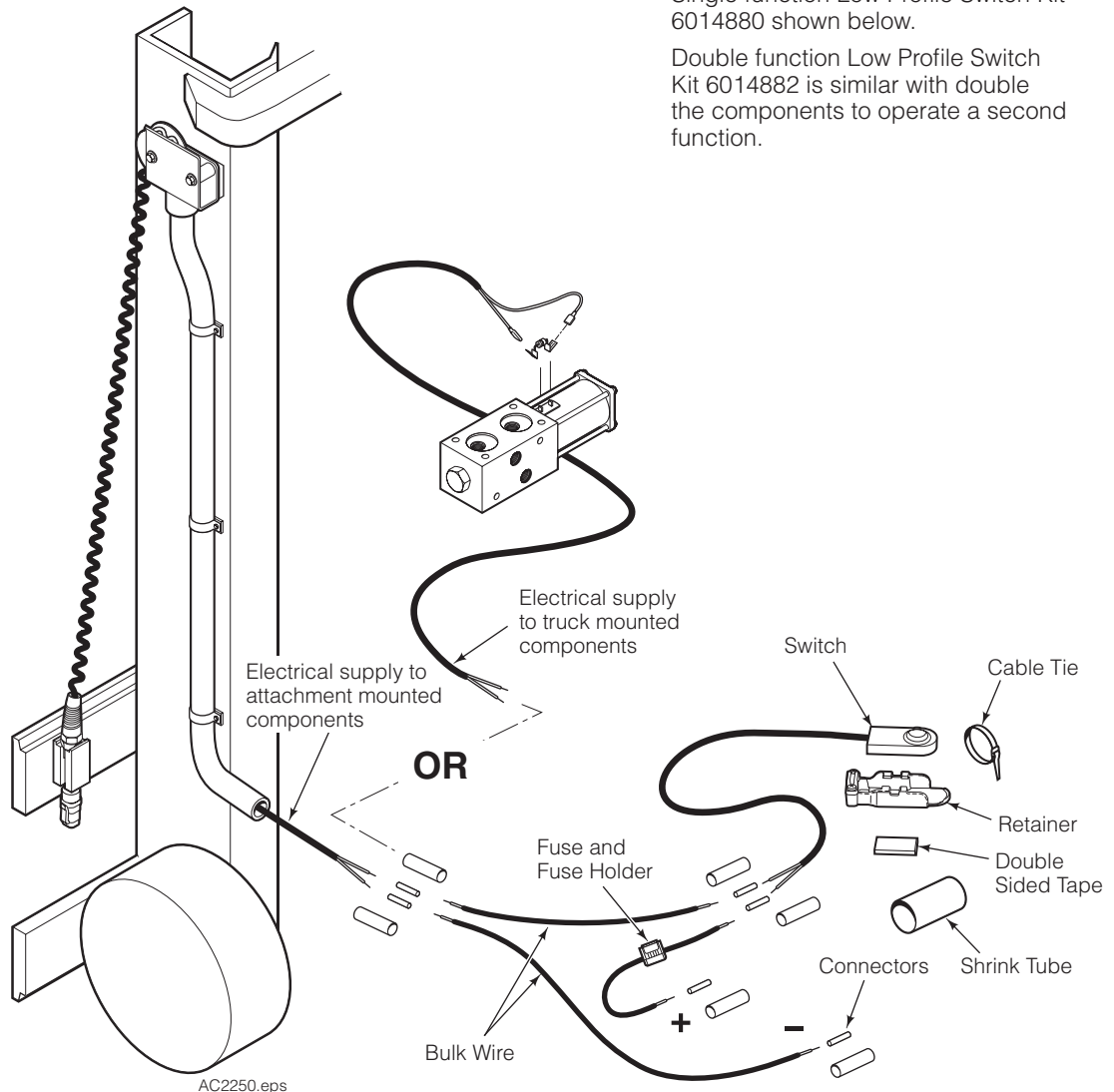
# Installation Instructions

## Low Profile Switch Kits 6014880 – Single Function 6014882 – Double Function

This manual provides installation instructions for Cascade Low Profile Switch Kits. The kits allow operator control of an attachment electrical function with an easy to install switch for the truck control handle and a fuse. The kit integrates easily with truck component or a Cascade Power Supply Kit to route electricity over the mast to an attachment.

Single function Low Profile Switch Kit 6014880 shown below.

Double function Low Profile Switch Kit 6014882 is similar with double the components to operate a second function.



**cascade**<sup>®</sup>  
**corporation**

**For Technical Support . . .**

Call: 1-800-227-2233 Fax: 1-888-329-8207

Internet: [www.cascorp.com](http://www.cascorp.com)

Write: Cascade Corporation, PO Box 20187, Portland, OR 97294

**To Order Parts . . .**

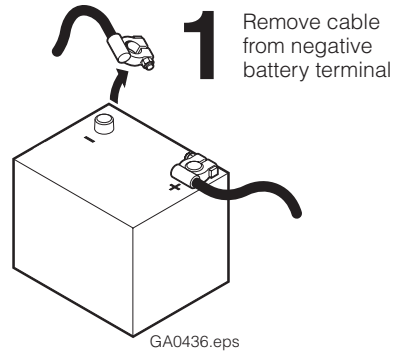
Call: 1-888-227-2233 Fax: 1-888-329-0234

Internet: [www.cascorp.com](http://www.cascorp.com)

Write: Cascade Corporation, 2501 Sheridan Ave., Springfield, OH 45505

# Kit Installation

**1** Disconnect the cable from the negative battery terminal or as directed by OEM truck manual.



**2** Install the switch assembly to the control knob. Position the switch on the handle in a location for comfortable thumb or index finger operation. To secure the switch assembly, do one of the following:

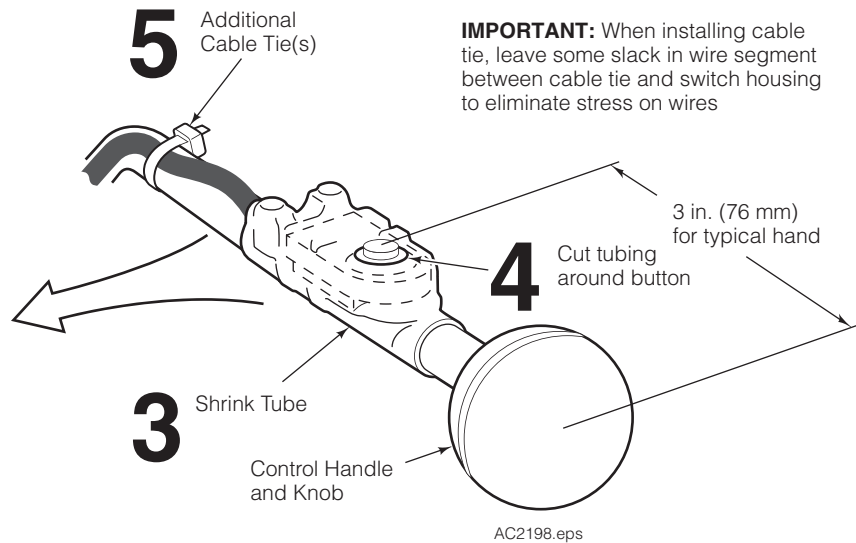
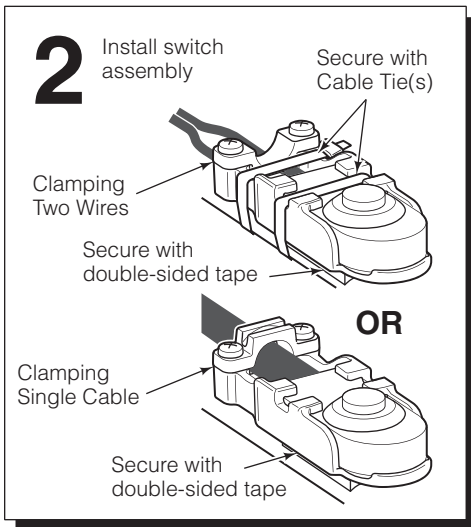
- Place double-sided tape under the switch assembly and attach to truck handle.

**OR**

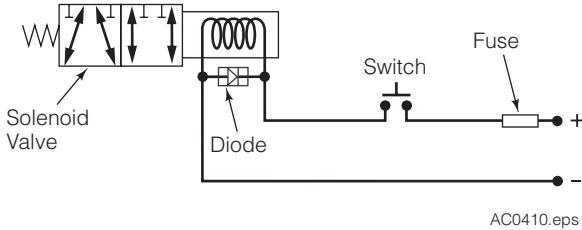
- Place double-sided tape under the switch assembly and attach to truck handle. Loop and tighten cable ties around the switch assembly and truck handle.

**3** Install heat shrink tubing (optional if cable ties are installed) over the handle and switch assembly. Use a heat gun, heat the tubing to secure the switch to the handle. Reinstall the knob, if required.

**4** Carefully cut a circle out of the tubing round the button.

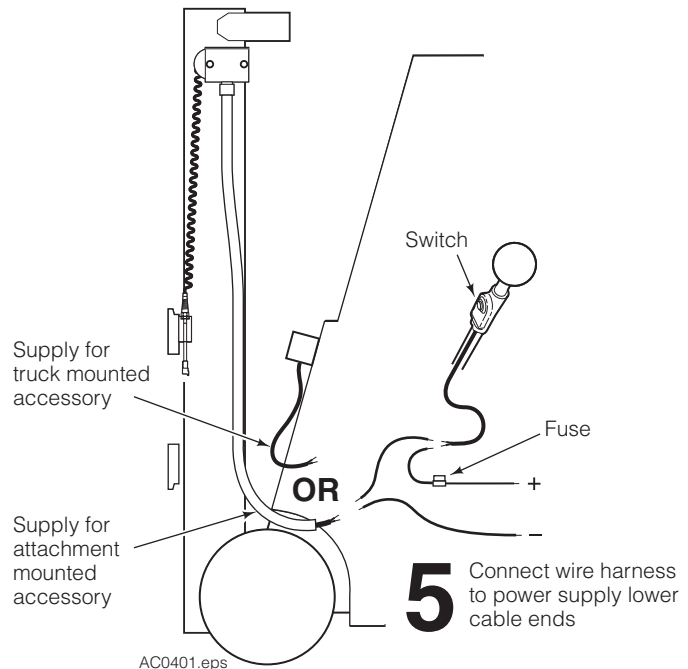


**5** Connect the switch wires to the power supply or truck mounted accessory wires and truck power as marked. Crimp the connectors and cover with the heat shrink tube. Watch for pinch and wear points. Install cable ties as needed.

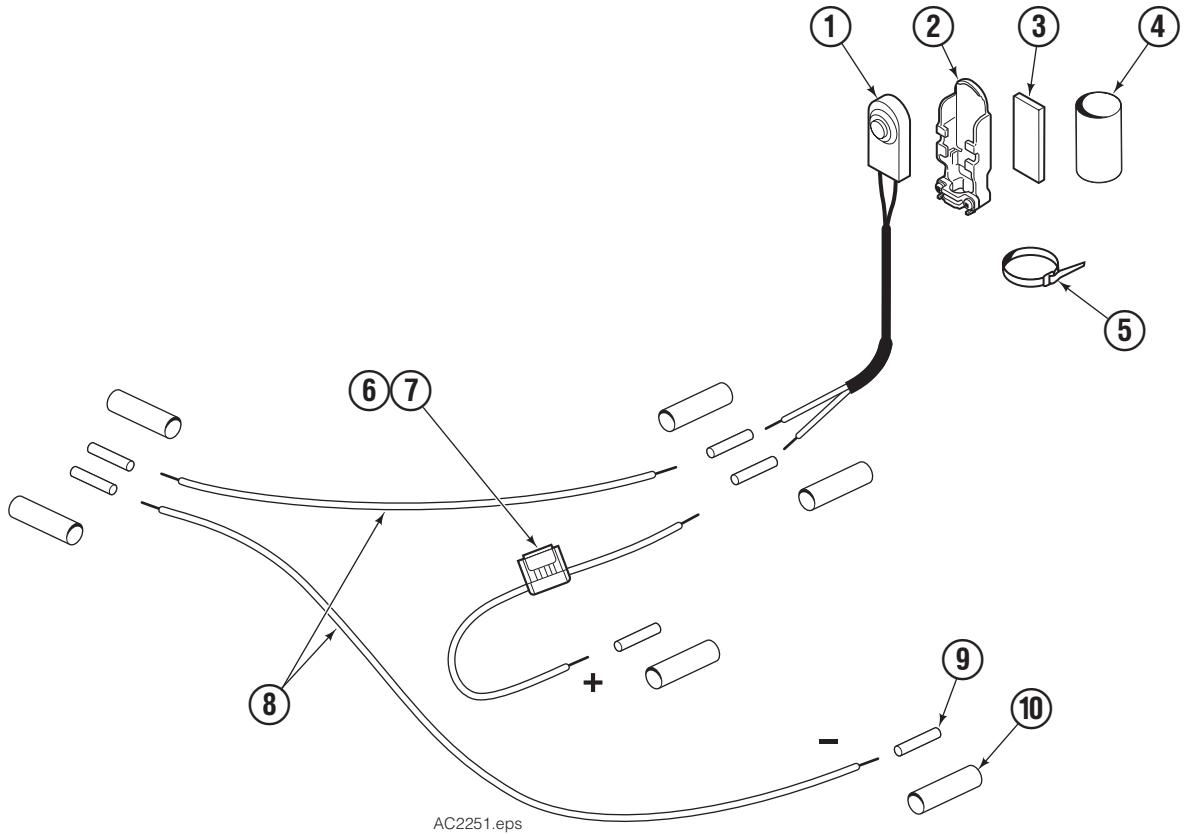


**6** Connect the battery cable(s) to their proper terminals.

**7** Test the electrical functions for proper operation. Raise and lower the mast to check the power supply coil cable for proper alignment, extension and retraction.



# Low Profile Switch Kits



Single Function			
REF	QTY	PART NO.	DESCRIPTION
		6014880	Operator Control Switch Kit
1	1	6009928	Switch ■
2	1	6821504	Switch Retainer ■
3	1	6014987	Double Sided Tape
4	1	6822532	Shrink Tube
5	3	6822796	Cable Tie
6	1	228154	Fuse – 7.5 Amp
7	1	219402	Fuse Holder
8	1	6014990	Wire –18 AWG
9	6	6014986	Connector
10	6	6016648	Shrink Tube

■ Included in Switch Assembly 6824997

Double Function			
REF	QTY	PART NO.	DESCRIPTION
		6014882	Operator Control Switch Kit
1	2	6009928	Switch ■
2	2	6821504	Switch Retainer ■
3	2	6014987	Double Sided Tape
4	2	6822532	Shrink Tube
5	6	6822796	Cable Tie
6	2	228154	Fuse – 7.5 Amp
7	2	219402	Fuse Holder
8	2	6014990	Wire –18 AWG
9	12	6014986	Connector
10	12	6016648	Shrink Tube

■ Included in Switch Assembly 6824997

**Do you have questions you need answered right now?**

Call your nearest Cascade Service Department.

Visit us online at [www.cascorp.com](http://www.cascorp.com)

**AMERICAS**

**Cascade Corporation  
U.S. Headquarters**  
2201 NE 201st  
Fairview, OR 97024-9718  
Tel: 800-CASCADE (227-2233)  
Fax: 888-329-8207

**Cascade Canada Inc.**  
5570 Timberlea Blvd.  
Mississauga, Ontario  
Canada L4W-4M6  
Tel: 905-629-7777  
Fax: 905-629-7785

**Cascade do Brasil**  
Rua João Guerra, 134  
Macuco, Santos - SP  
Brasil 11015-130  
Tel: 55-13-2105-8800  
Fax: 55-13-2105-8899

**EUROPE-AFRICA**

**Cascade Italia S.R.L.  
European Headquarters**  
Via Dell'Artigianato 1  
37030 Vago di Lavagno (VR)  
Italy  
Tel: 39-045-8989111  
Fax: 39-045-8989160

**Cascade (Africa) Pty. Ltd.**  
PO Box 625, Isando 1600  
60A Steel Road  
Sparton, Kempton Park  
South Africa  
Tel: 27-11-975-9240  
Fax: 27-11-394-1147

**ASIA-PACIFIC**

**Cascade Japan Ltd.**  
2-23, 2-Chome,  
Kukuchi Nishimachi  
Amagasaki, Hyogo  
Japan, 661-0978  
Tel: 81-6-6420-9771  
Fax: 81-6-6420-9777

**Cascade Korea**  
121B 9L Namdong Ind.  
Complex, 691-8 Gojan-Dong  
Namdong-Ku  
Inchon, Korea  
Tel: +82-32-821-2051  
Fax: +82-32-821-2055

**Cascade-Xiamen**  
No. 668 Yangguang Rd.  
Xinyang Industrial Zone  
Haicang, Xiamen City  
Fujian Province  
P.R. China 361026  
Tel: 86-592-651-2500  
Fax: 86-592-651-2571

**Cascade India Material  
Handling Private Limited**  
No 34, Global Trade Centre  
1/1 Rambaugh Colony  
Lal Bahadur Shastri Road,  
Navi Peth, Pune 411 030  
(Maharashtra) India  
Phone: +91 020 2432 5490  
Fax: +91 020 2433 0881

**Cascade Australia Pty. Ltd.**  
1445 Ipswich Road  
Rocklea, QLD 4107  
Australia  
Tel: 1-800-227-223  
Fax: +61 7 3373-7333

**Cascade New Zealand**  
15 Ra Ora Drive  
East Tamaki, Auckland  
New Zealand  
Tel: +64-9-273-9136  
Fax: +64-9-273-9137

**Sunstream Industries  
Pte. Ltd.**  
18 Tuas South Street 5  
Singapore 637796  
Tel: +65-6795-7555  
Fax: +65-6863-1368

