



Installation Instructions

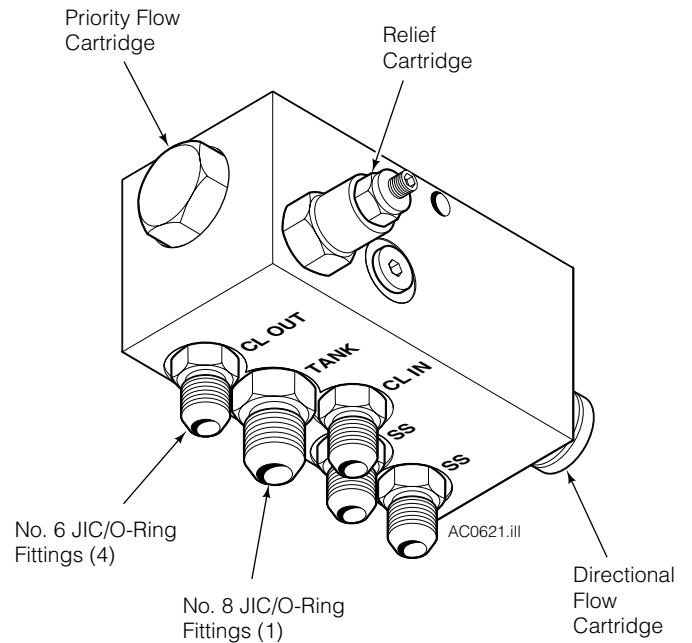
Anti-Spiking Valve Kit 6027353

This Installation Sheet provides a description and installation instructions to install a Cascade Anti-Spiking Valve into the CLAMP & SIDESHIFT hydraulic circuits on attachments.

Description:

The Anti-Spiking Valve prevents the auxiliary valve control lever from being used to 'spike' or 'milk' the CLAMP hydraulic circuit to increase clamp force. The Valve also minimizes clamp force fluctuations during sideshifting. The result is load damage reduction and increased Clamp life due to use of lower clamping pressures.

The CLAMP line must be plumbed through the valve. SIDE-SHIFT lines are connected to the valve using 'tee' connections. The valve requires a dedicated return-to-tank line.



Valve and Hose Installation

IMPORTANT: Leave approximately 3 in. (75 mm) clearance between components to allow for fittings and hoses.

- 1 Determine a suitable location on the truck cowl to install the Anti-Spiking Valve. A preferable location is near the 3-position or other selectable relief valve if used.

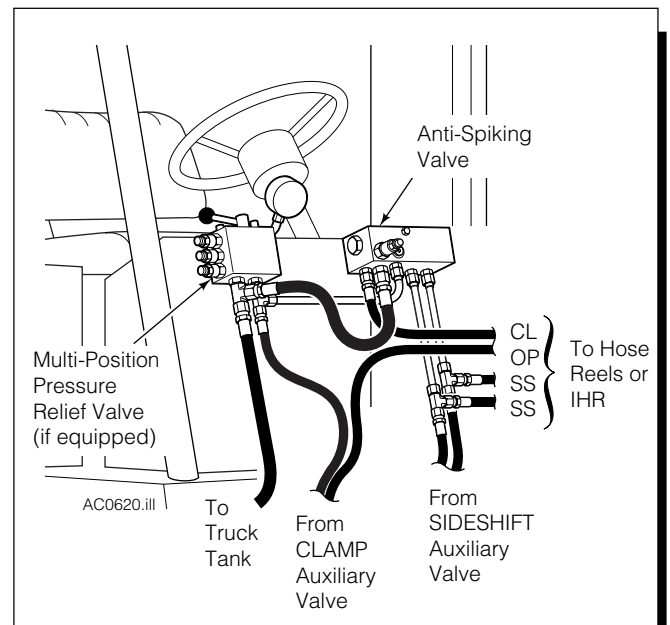


WARNING: Before removing hydraulic lines or components, relieve pressure in the Attachment hydraulic system. Turn the truck off and move the auxiliary control levers several times in both directions.

- 2 Prepare hoses or tubing and connect as shown on the schematic (back page). Hose and fitting size should be equal to existing. Valve supply ports are No. 6 fittings, Return-to-tank port is a No. 8 fitting.

IMPORTANT: Relief cartridge in Anti-Spiking Valve is factory-adjusted for optimum operation - **do not adjust**.

- 3 Test the Clamp through five complete cycles to assure proper operation before returning it to the job.



Part No. 6026827 R-1

cascade[®]
corporation

For Technical Support . . .

Call: 1-800-227-2233 Fax: 1-888-329-8207

Internet: www.cascorp.com

Write: Cascade Corporation, PO Box 20187, Portland, OR 97294

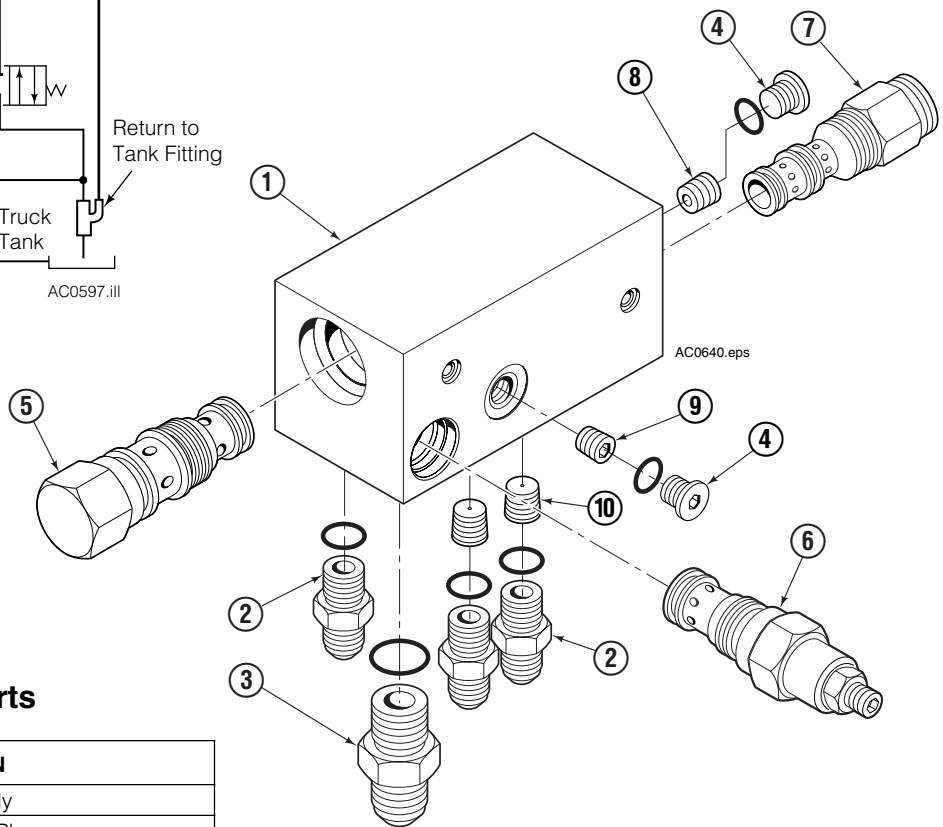
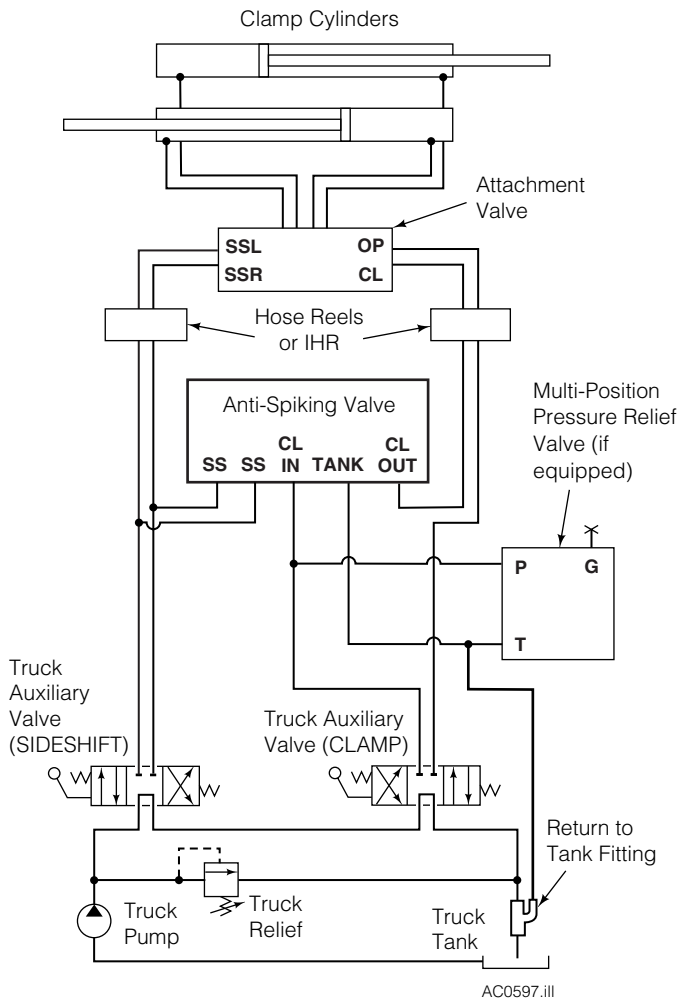
To Order Parts . . .

Call: 1-888-227-2233 Fax: 1-888-329-0234

Internet: www.cascorp.com

Write: Cascade Corporation, 2501 Sheridan Ave., Springfield, OH 45505

Hydraulic Connection Diagram



Replacement Parts

REF	QTY	PART NO.	DESCRIPTION
		6026828	Valve Assembly
1	1	6026849	Valve Body w/Plugs
2	4	604511	Fitting, 6
3	1	601377	Fitting, 8
4	2	609234	Fitting, 4
5	1	6026857	Priority Flow Valve Cartridge
6	1	6026853	Relief Valve Cartridge
7	1	6026861	Directional Valve Cartridge
8	1	6026895	Orifice .150
9	1	6026890	Orifice .052
10	2	6026897	Orifice .052