

Q *UICK-START GUIDE*



This kit includes:

- Quick-Start Guide
- CD
- Cross-over Ethernet Cable
- Ethernet Connector
- SD Card Reader (USB)
- Cable Assembly

Manual Number 6075868

cascade[®]
corporation

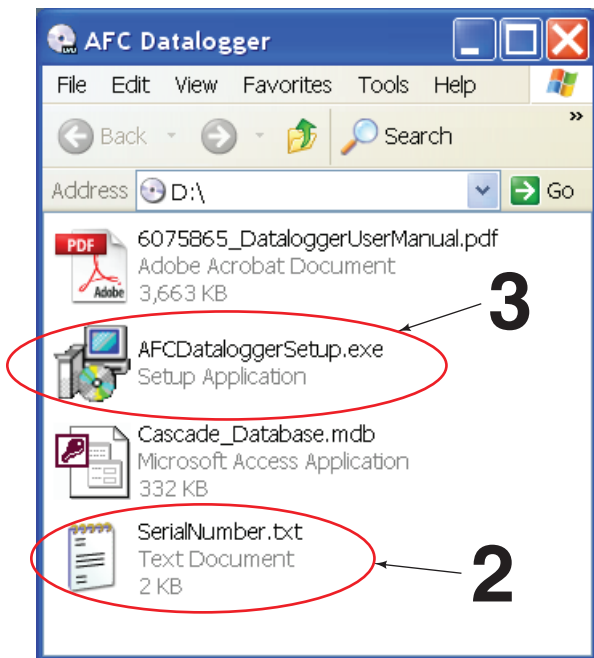
Cascade is a Registered Trademark
of Cascade Corporation

IMPORTANT: Refer to the User Manual (manual number 6075865) for **complete** instructions on installing, settings configuration and using the Cascade AFC Datalogger. The User Manual can be found on the enclosed CD. The AFC controller may need hardware replaced and/or software settings updated. Refer to the AFC Datalogger User Manual (manual number 6075865) or the AFC Manual (manual number 601197).

AFC Datalogger Software Installation

- 1 Insert Cascade AFC Datalogger CD into the host computer's CD-ROM. In 'My Computer' open the CD.
- 2 Open 'SerialNumber.txt' text file. Copy the serial number.
- 3 Open 'AFCDataloggerSetup.exe' file and follow the prompts to install the software.

NOTE: When the serial number prompt appears, paste the serial number in the text box.

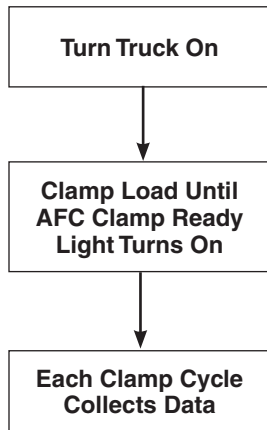


AC1438.eps

Collecting Clamp Force Data

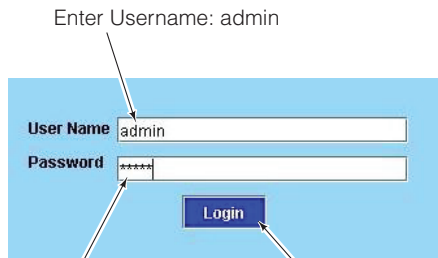
IMPORTANT: If a load is not lifted off the ground, the clamp force and load weight will read zero.

- 1 Turn truck on. Within ten seconds, the AFC Datalogger LED should change from constantly lit to two rapid flashes.
- 2 Operate the clamp in its typical environment.
- 3 The AFC Datalogger LED will flash three times to indicate data has been collected.



Open AFC Datalogger Software

- 1 From the window's 'Start' menu, select 'Program Files' → 'AFC Datalogger' → 'AFC Datalogger'.
- 2 Wait for a login screen to appear.
- 3 Enter username: admin.
- 4 Enter password: admin.
- 5 Left click on the 'Login' button.
- 6 The 'Download' tab will open.



- 6 Selected screen will have a grayed tab



Downloading Data

Data can be retrieved by downloading data from a card reader **or** with an ethernet cable. **NOTE:** Downloading data from the card reader is quicker than from the ethernet cable.

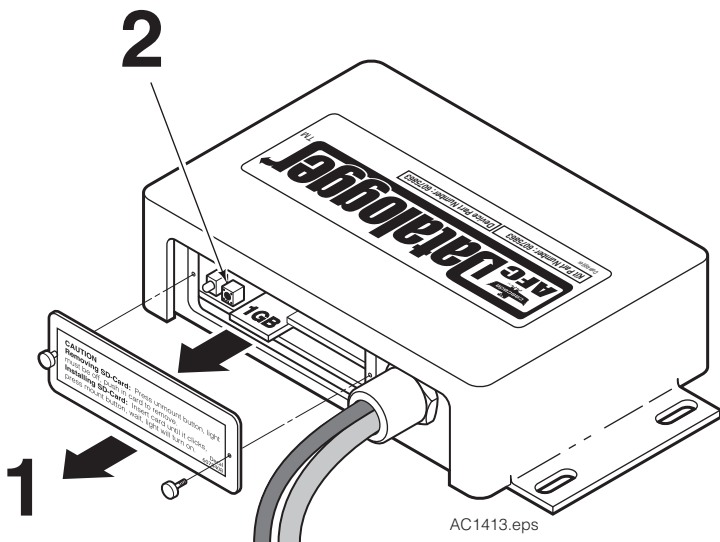
Card Reader Method

- 1 Loosen thumbscrews and remove access cover from the AFC Datalogger.



WARNING: Removing the SD Card before the LED is 'off' can cause data to corrupt. Press the Mount/Unmount button first and wait for the LED light to turn off or turn truck off.

- 2 Turn truck off or push the Mount/Unmount button next to the SD Card. Wait for the LED light to turn off. Remove the SD Card from the AFC Datalogger.

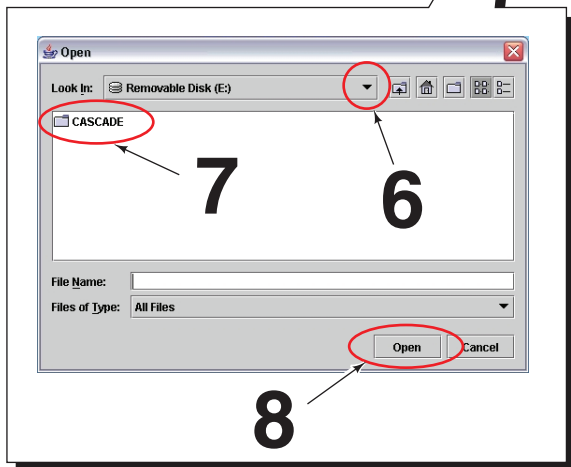


- 3 Insert the SD Card into a card reader. Plug the card reader into the host computer. The SD Card will appear in 'My Computer' as a separate disk drive.
- 4 Run the AFC Datalogger application software and login. Refer to the 'Open Datalogger Software' section (page 2).

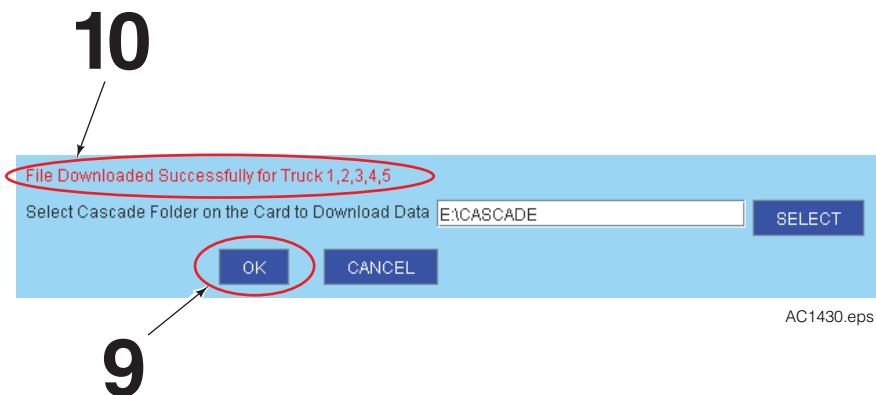
- 5 In the 'Download' tab, Click on the 'Select' button.
- 6 Make sure that the proper card is selected in the 'Look In' dialog box. Choose the drop down arrow to choose a different drive.
- 7 Click **once** on the 'Cascade' folder.
- 8 Click on the 'Open' button.



AC1440.eps



- 9 Left click the 'OK' button in the AFC Datalogger menu.
- 10 Once the display message 'File Downloaded Successfully for Trucks...' appears, the file(s) are deleted from the SD Card.



- 11 When finished with downloading, use the 'Safely Remove Hardware' icon before removing the card reader from the USB port.
- IMPORTANT:** Failure to remove the SD Card safely may corrupt any stored files on the card.

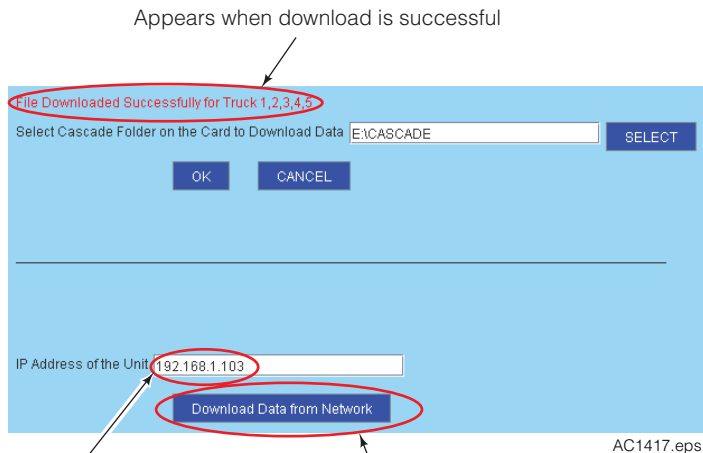


- 12 Reinstall card in AFC Datalogger and secure access cover.
- NOTE:** Cover Foam seats against SD Card.

Ethernet Method

The network connection must be setup on the host computer to download data (see AFC Datalogger User Manual).

- 1 Connect the provided coupler and cross-over ethernet cable to the AFC Datalogger and host computer. A longer cross-over ethernet cable may be used, if needed.
- 2 Run Cascade AFC Datalogger software and login. Refer to the 'Open AFC Datalogger Software' section (page 2).
- 3 In the 'Download' tab, check that the IP address is 192.168.0.103.
- 4 Click 'Download Data from Network' button. Various messages will appear to indicate the download progress. When the download is complete, the file(s) on the SD Card will be deleted.



3

4 IP Address for
the DataLogger
Controller

Create Event Log Report

- 1 In the AFC Datalogger application software, select the 'Reports' tab.
- 2 Choose 'Event Log' in the 'Report Type' drop down box.
- 3 Enter the starting date in mm/dd/yyyy format.
- 4 Enter the ending date in mm/dd/yyyy format.
- 5 In the 'Select Truck IDs' list box, choose 'All'.
- 6 In the 'Select Columns' list box, choose 'All'.
- 7 Click the 'Run' button to create the report. Refer to the AFC Datalogger User Manual to export the report to Excel.

Report Type: Event Log

Start Date (mm/dd/yyyy): 01/01/2007

End Date (mm/dd/yyyy): 01/01/2008

Select Truck Ids: All

Select Columns: All

Run

AC1442.eps

