



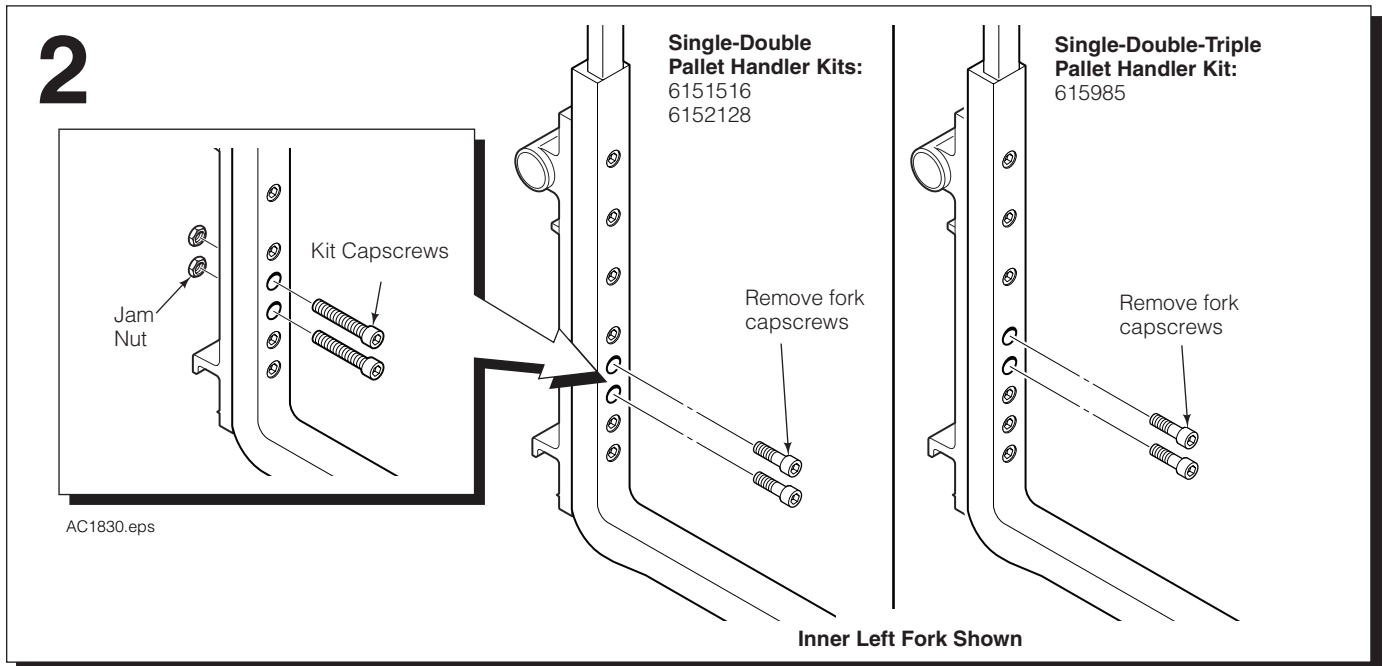
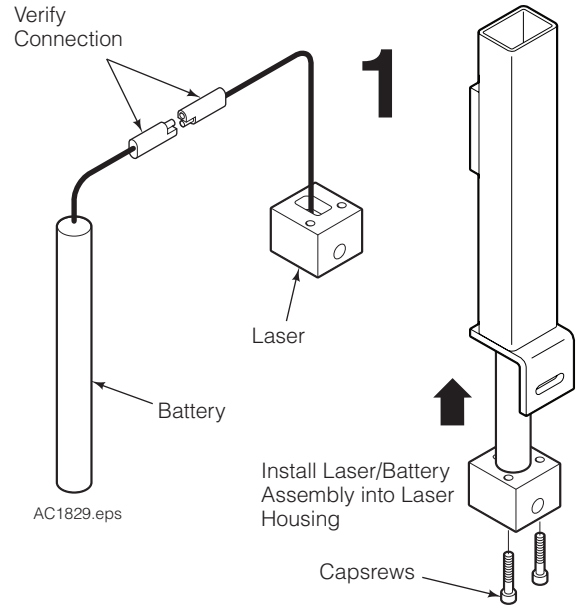
Installation Instructions

Laser Alignment Guide Kits 6151516, 6151985 and 6152128

This sheet provides instruction on installing laser alignment guides to G-Series Multiple Load Handlers. To prevent product damage and injury, the laser alignment guide uses a laser to determine fork placement. Each kit contains mounting plate, capscrews, laser assembly battery and battery charger.

INSTALLATION FOR EACH FORK

- 1 Verify that the battery and laser are connected. Install the laser assembly into the housing. Tighten capscrews to 6 ft.-lbs. (8 Nm).
- 2 Remove two fork capscrews from the inner forks as shown. Install kit capscrews and jam nut. Tighten capscrews to 200 ft.-lbs. (270 Nm).



cascade[®]
corporation

For Technical Support . . .

Call: 1-800-227-2233 Fax: 1-888-329-8207

Internet: www.cascorp.com

Write: Cascade Corporation, PO Box 20187, Portland, OR 97294

To Order Parts . . .

Call: 1-888-227-2233 Fax: 1-888-329-0234

Internet: www.cascorp.com

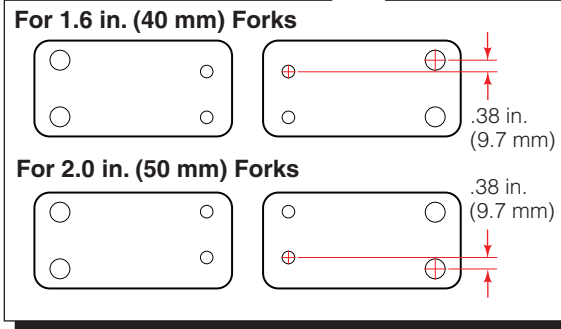
Write: Cascade Corporation, 2501 Sheridan Ave., Springfield, OH 45505

3 Install the mounting bracket using the kit nuts. Tighten nuts to 200 ft.-lbs. (270 Nm).

NOTE: Mounting bracket 6152127 has two orientations based on fork width, as shown.

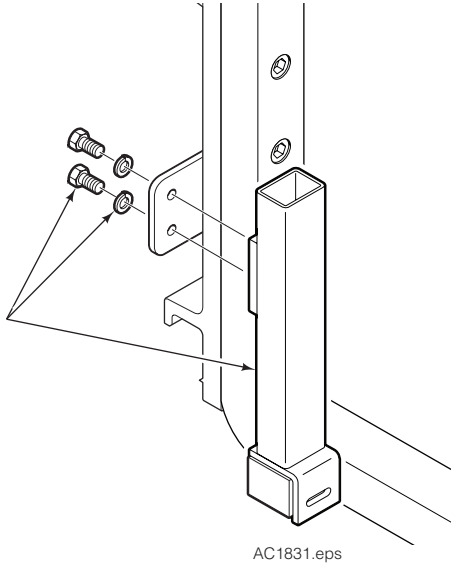
4 Mount the laser housing assembly to the bracket using the provided capscrews and washers. Tighten capscrews to 25 ft.-lbs. (35 Nm).

3



AC1835.eps

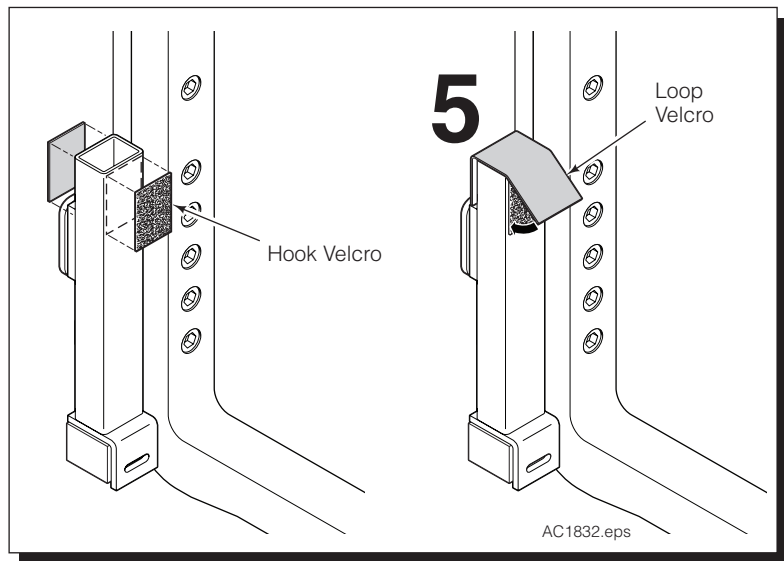
4



5 Install velcro on the laser housing to close off the top. Install hook velcro front and back, then loop velcro over the top.

NOTE: Laser will automatically turn on whenever there is movement and will turn off 4 minutes later.

5



LASER ALIGNMENT

1 Lift the attachment and close forks. The laser will turn on.

2 Lay a bar across the fork tips.

3 Verify that the laser aligns with outer fork tips. To adjust laser, use a 5/64 in. allen wrench to turn setscrew, located at the bottom of the laser assembly.

NOTE: The laser dot should appear at the lower edge of the bar.

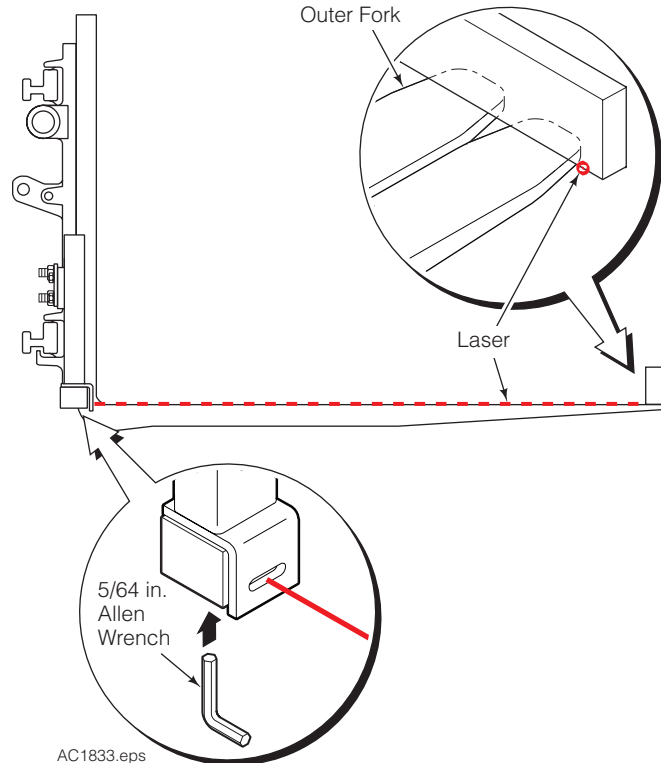
BATTERY

Battery is a nickel metal hydride.

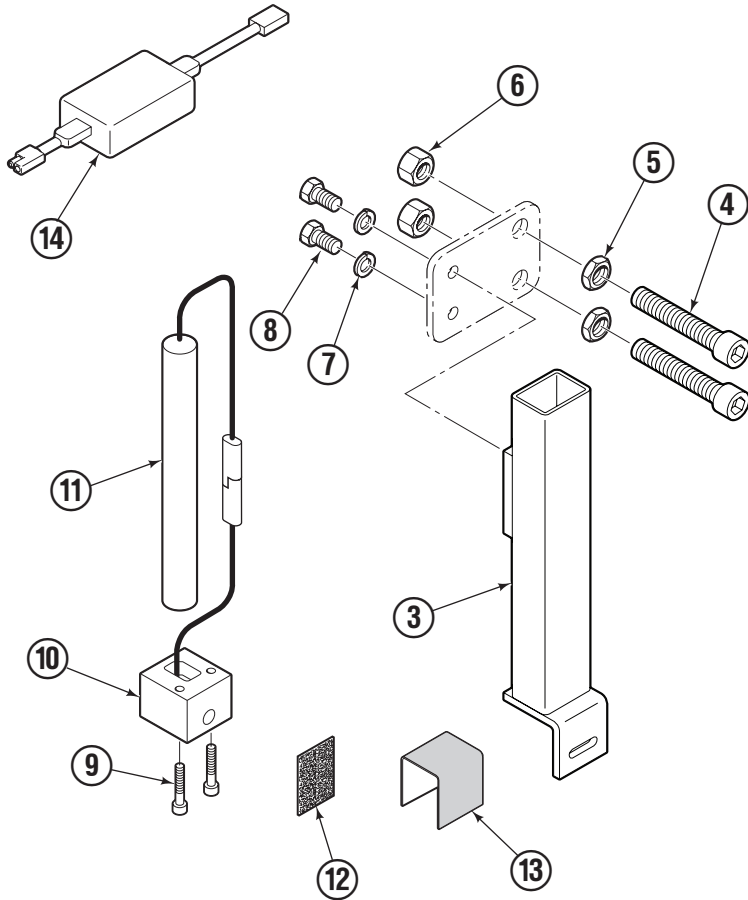
Charging Battery – Remove velcro from laser housing. Disconnect battery from laser and remove from housing. Connect battery to charging unit. Plug charging unit into a 110 VAC outlet. An LED will start blinking and then become solid. Charging will take approximately 8 hours. Charging unit will automatically shut off when battery is completely charged.

IMPORTANT: Charge battery in a cool, dry area with adequate ventilation. This will increase the life of the battery.

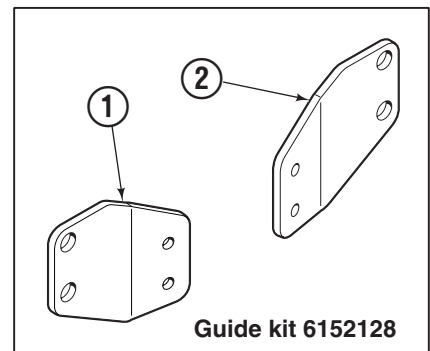
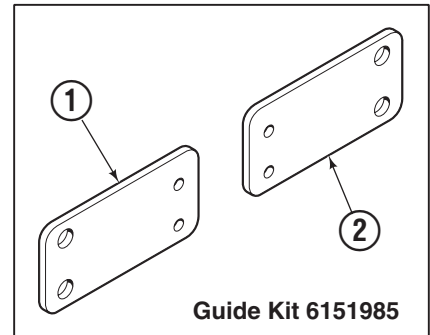
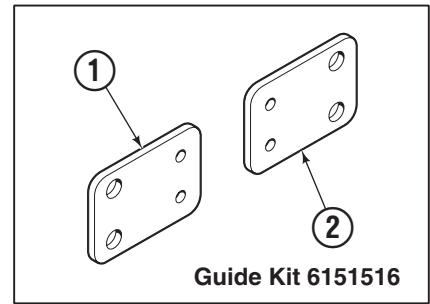
2



Laser Alignment Guide Kits



AC1834.eps



		Single-Double	Single-Double-Triple	Single-Double with block stops	
REF	QTY	PART NO.	PART NO.	PART NO.	DESCRIPTION
		6151516	6151985	6152128	Laser Alignment Guide Kit
1	1	6151503	6152081	6152127	Mounting Bracket
2	1	6151503	6151984	6152127	Mounting Bracket

Common Parts			
REF	QTY	PART NO.	DESCRIPTION
3	2	6151500	Laser Housing Assembly
4	4	6151517	Cap screw, M16 X 90
5	4	679828	Jam Nut, M16
6	4	763046	Nut, M16
7	4	787383	Washer, M10
8	4	684594	Cap screw, M10 X 20
9	4	768789	Cap screw, M6 x 40
10	2	6151504	Laser
11	4	6151519	Battery
12	4	6151528	Velcro, Hook
13	2	6151529	Velcro, Loop
14	2	6151571	Battery Charger

Do you have questions you need answered right now? Call your nearest Cascade Service Department. Visit us online at www.cascorp.com

AMERICAS

**Cascade Corporation
Parts Sales**
2501 Sheridan Ave.
Springfield, OH 45505
Tel: 888-CASCADE (227-2233)
Fax: 888-329-0234

Cascade Canada Inc.
5570 Timberlea Blvd.
Mississauga, Ontario
Canada L4W-4M6
Tel: 905-629-7777
Fax: 905-629-7785

Cascade do Brasil
Rua João Guerra, 134
Macuco, Santos - SP
Brasil 11015-130
Tel: 55-13-2105-8800
Fax: 55-13-2105-8899

EUROPE-AFRICA

**Cascade Italia S.R.L.
European Headquarters**
Via Dell'Artigianato 1
37050 Vago di Lavagno (VR)
Italy
Tel: 39-045-8989111
Fax: 39-045-8989160

Cascade (Africa) Pty. Ltd.
PO Box 625, Isando 1600
60A Steel Road
Sparton, Kempton Park
South Africa
Tel: 27-11-975-9240
Fax: 27-11-394-1147

ASIA-PACIFIC

Cascade Japan Ltd.
2-23, 2-Chome,
Kukuchi Nishimachi
Amagasaki, Hyogo
Japan, 661-0978
Tel: 81-6-6420-9771
Fax: 81-6-6420-9777

Cascade Korea
121B 9L Namdong Ind.
Complex, 691-8 Gojan-Dong
Namdong-Ku
Inchon, Korea
Tel: +82-32-821-2051
Fax: +82-32-821-2055

Cascade-Xiamen
No. 668 Yangguang Rd.
Xinyang Industrial Zone
Haicang, Xiamen City
Fujian Province
P.R. China 361026
Tel: 86-592-651-2500
Fax: 86-592-651-2571

**Cascade India Material
Handling Private Limited**
No 34, Global Trade Centre
1/1 Rambaugh Colony
Lal Bahadur Shastri Road,
Navi Peth, Pune 411 030
(Maharashtra) India
Phone: +91 020 2432 5490
Fax: +91 020 2433 0881

Cascade Australia Pty. Ltd.
1445 Ipswich Road
Rocklea, QLD 4107
Australia
Tel: 1-800-227-223
Fax: +61 7 3373-7333

Cascade New Zealand
15 Ra Ora Drive
East Tamaki, Auckland
New Zealand
Tel: +64-9-273-9136
Fax: +64-9-273-9137

**Sunstream Industries
Pte. Ltd.**
18 Tuas South Street 5
Singapore 637796
Tel: +65-6795-7555
Fax: +65-6863-1368

