



Installation Instructions

Solenoid Adaption Kits

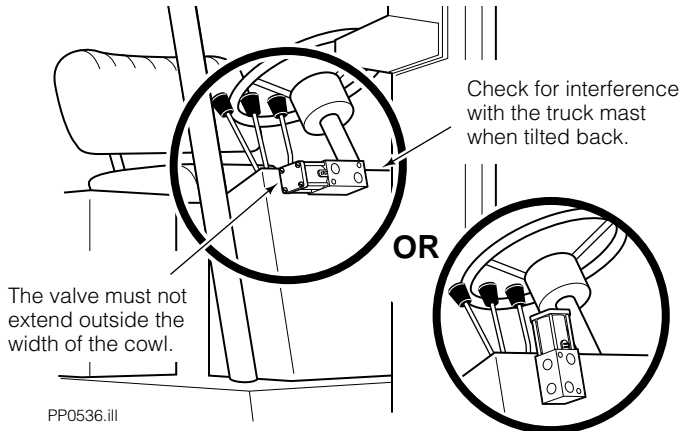
Kits without Operator Switch:

6011871 (12V), 6011872 (24V), 6011873 (36V) and 6011874 (48V)

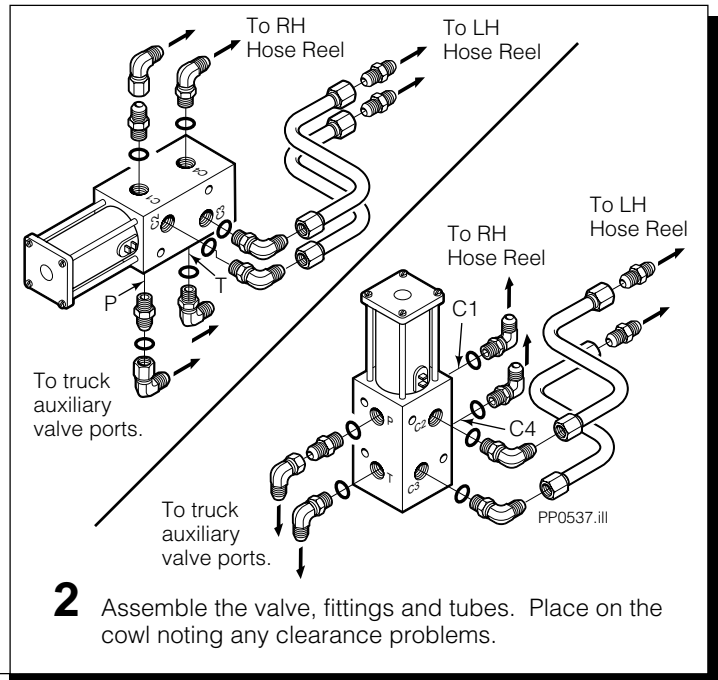
Kits with Operator Switch:

6014883 (12V), 6014885 (24V), 6014886 (36V) and 6014887 (48V)

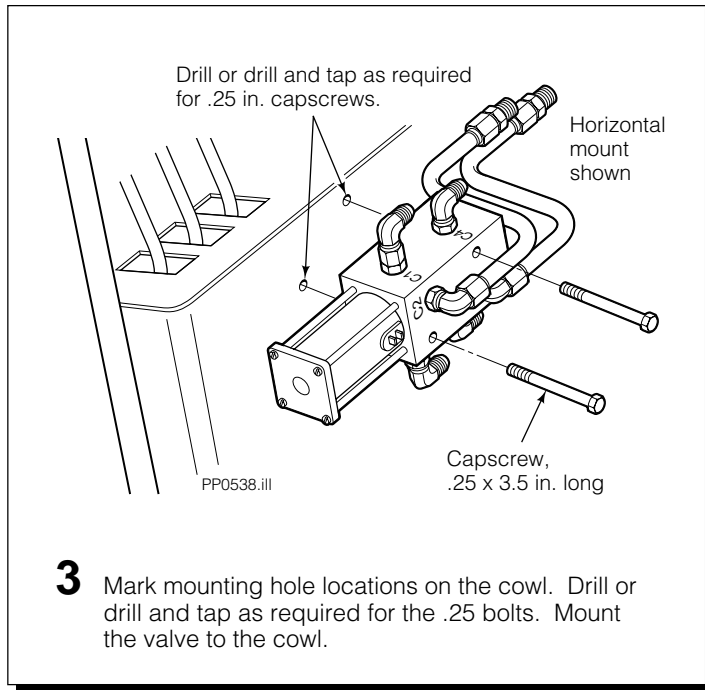
This sheet describes the installation of Solenoid Adaption Kits. Each kit converts a three function auxiliary control valve to a four function control valve. Refer to Installation Instruction 673835 for Hose Reel Assembly installation.



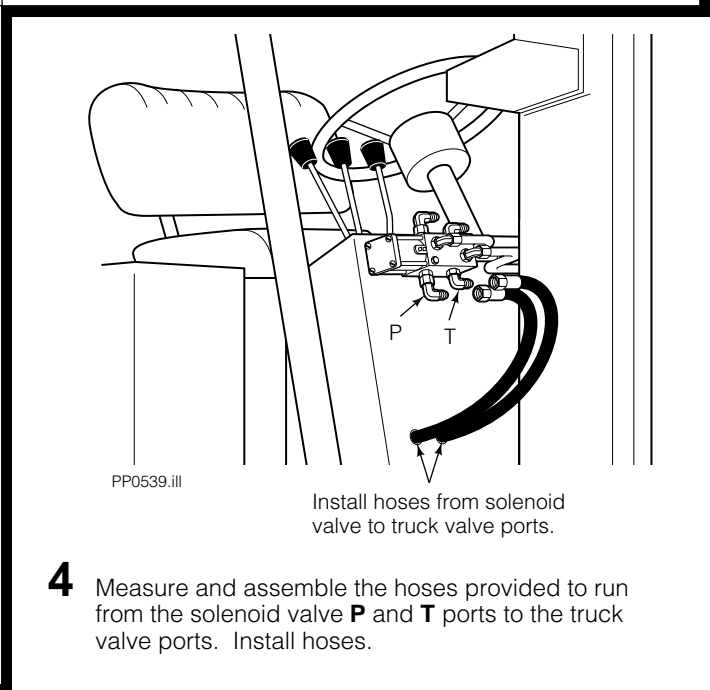
- 1** Determine an approximate mounting location for the solenoid valve on the truck cowl. The valve can be mounted horizontal or vertical. The valve must not extend outside the width of the cowl or interfere with the truck mast when tilted back.



- 2** Assemble the valve, fittings and tubes. Place on the cowl noting any clearance problems.



- 3** Mark mounting hole locations on the cowl. Drill or drill and tap as required for the .25 bolts. Mount the valve to the cowl.



- 4** Measure and assemble the hoses provided to run from the solenoid valve **P** and **T** ports to the truck valve ports. Install hoses.

Part No. 6011870-R2

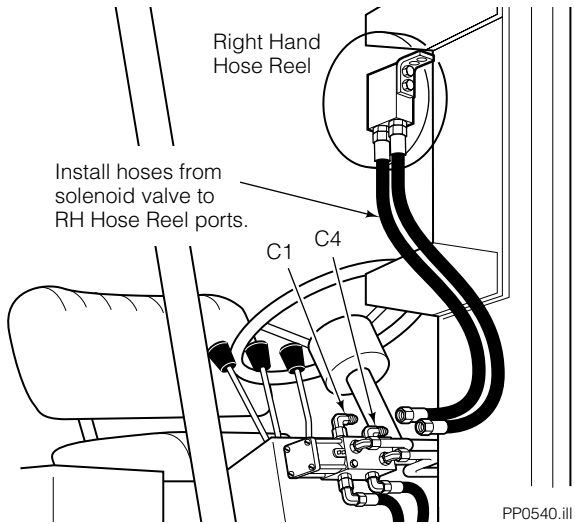
cascade[®]

For Technical Assistance . . .

Call: 1-800-CASCADE FAX: 888-329-8207

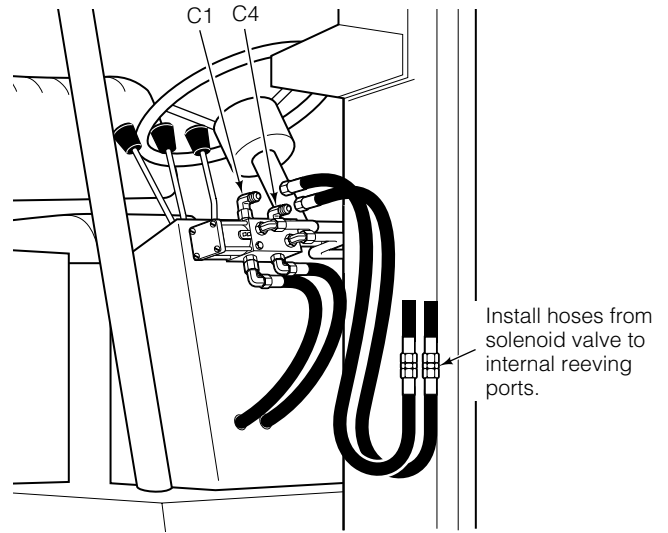
Write: Cascade Corporation, PO Box 20187, Portland, OR 97294

Installation with Hose Reel



PP0540.iii

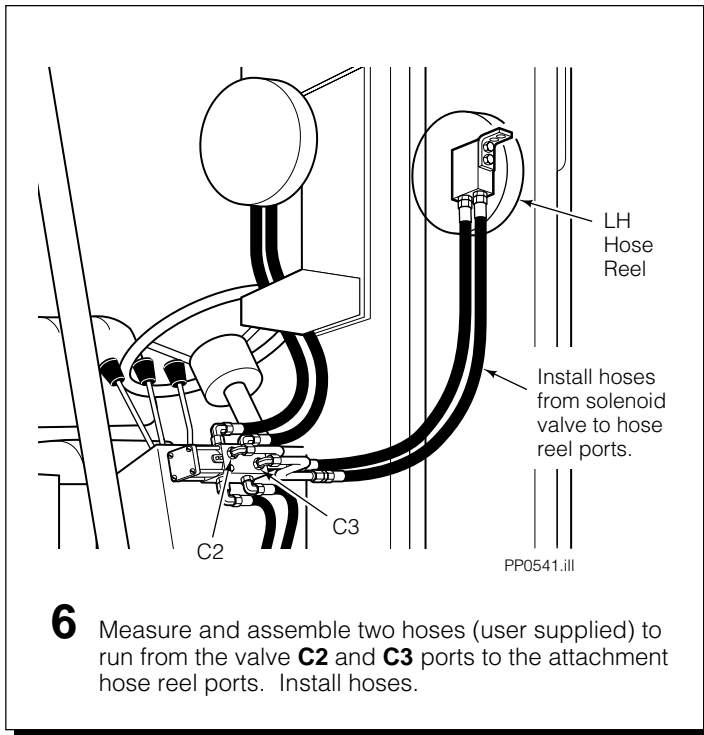
Installation with Internal Reaving



PP0542.iii

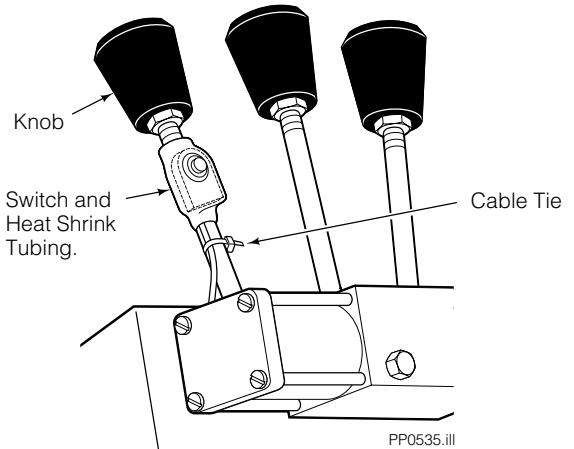
OR

- 5** Measure and assemble two hoses (user supplied) to run from the valve **C1** and **C4** ports to the hose reel ports or internal reaving fittings.



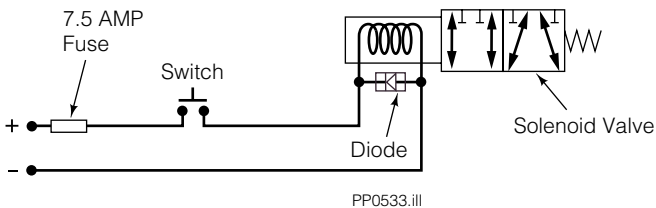
PP0541.iii

- 6** Measure and assemble two hoses (user supplied) to run from the valve **C2** and **C3** ports to the attachment hose reel ports. Install hoses.



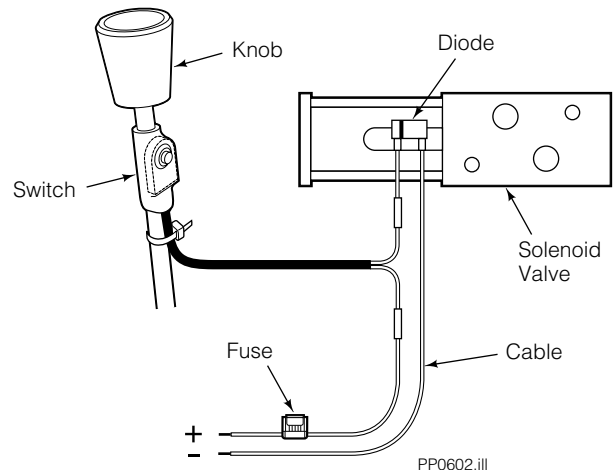
PP0535.iii

- 7** Remove the knob to install the switch to the control handle. Position the switch on the front of the handle. Over the handle and switch place the smallest heat shrink tubing that will fit. Using a heat gun, heat the tubing to secure the switch to the bracket. If it is difficult to feel or operate the switch button through the heat shrink tube, carefully cut a circle out of the tubing around the button.



PP0533.iii

- 8** Connect electric cables from the knob and solenoid valve terminals to the truck electrical system. The fuse must be connected to an unswitched positive terminal. The solenoid valve must be able to energize with the truck key in the off position.



PP0602.iii