



Quickly and Easily Add Forward Bin Dumping Capability

APPLICATIONS

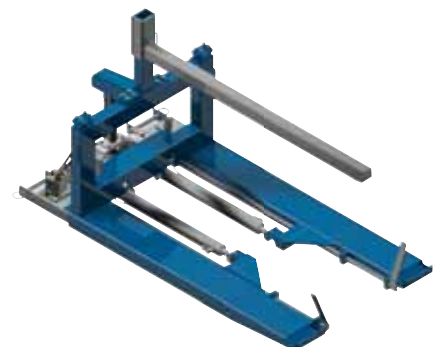
Designed to provide the fresh produce industry an efficient and economical means of handling and dumping bins. Can easily accommodate various bin heights by manually adjusting the top bin stops. Many boutique vineyards use the short 16 inch (400 mm) bin size which allows the grapes to be handled without crushing grapes at the bottom. The quick fork mounted design allows quick and easy installation perfect for seasonal use.

FEATURES

- Requires only one auxiliary function for operation
- Smooth dumping motion
- Full 135 degree forward tipping motion ensures the complete emptying of bin
- Quick disconnect hydraulic couplers provided
- Hydraulic adjustable bin stops can be actuated without forward tipping. This keeps the bin from sliding off the forks while transporting the bin to be dumped. Stops are visible allowing the driver to ensure they are actuated before bin dumps
- Long lead in taper on fork channels to minimize potential damage to bins
- Absence of side arms allows you to easily pick middle units from rows of tightly stacked bins

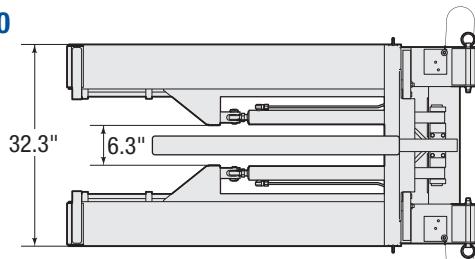
OPTIONS

- Left hand or right hand termination
- Single or dual load hold-down

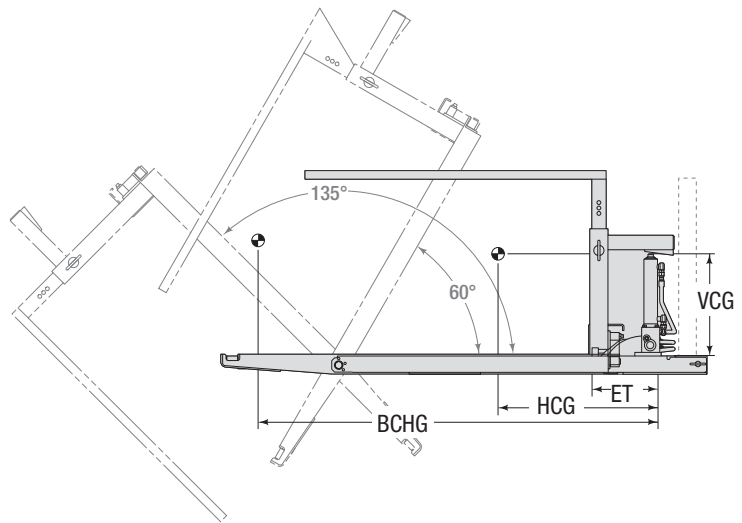
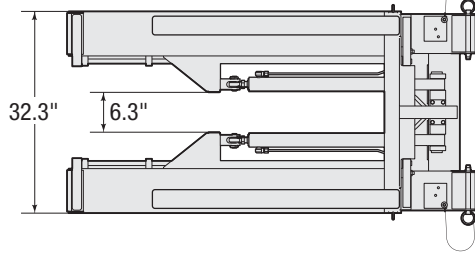


Easily and quickly gain the ability to dump produce bins.

A100



A200



| Catalog Order No. | Capacity @ 24" (600 mm) Load Center | | Mtg. Class | Weight | | Effective Thickness ET | Horizontal Ctr. of Gravity | | Vertical Ctr. of Gravity | | Bin HCG at Load Ctr. BHCG 0° / 60° | Min. Truck Carriage Width A | Bin Type |
|-------------------|-------------------------------------|-------|------------|--------|-----|------------------------|----------------------------|--------------|--------------------------|-----|------------------------------------|-----------------------------|----------|
| | lbs | kg | | lbs | kg | | HCG 0° / 60° | VCG 0° / 60° | BHCG 0° / 60° | | | | |
| 10A-QBB-A100 | 2,200 | 1,000 | Slip-On | 445 | 202 | 11.7" | 22.2" / 30.7" | 2.7" / 10.7" | ① | 36" | Macro Bin 16A-S / 24A-S | | |
| 10A-QBB-A200 | 2,200 | 1,000 | Slip-On | 445 | 202 | 11.7" | 22.2" / 30.7" | 2.7" / 10.7" | ① | 36" | Macro Bin 16A-S / 24A-S | | |

① See illustration below for calculating bin CG with load at 60°

► Requires 42" forks.

► Maximum fork dimension: 5.5" x 1.75" x 43" (140 x 45 x 1100)

Calculating Bin Center of Gravity with Load at 60°

$$BHCG = 48 + [0.866 (BVCG) - 1/2 (L/2 - 12.8)] \text{ inches.}$$

