



*G-Series
Revolving Fork
Clamp operates
as a clamp, fork
positioner and
rotator.*

Provides Fork Handling Versatility for Demanding Applications

APPLICATIONS

Cascade Revolving Fork Clamps are widely used in recycling, food processing, automated manufacturing and general manufacturing operations where bins and hoppers are used for dumping and general handling requirements.

FEATURES

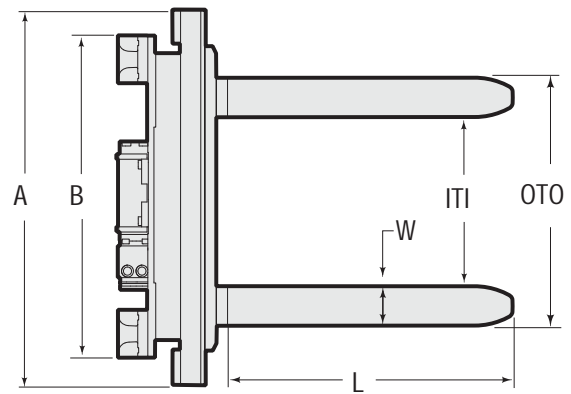
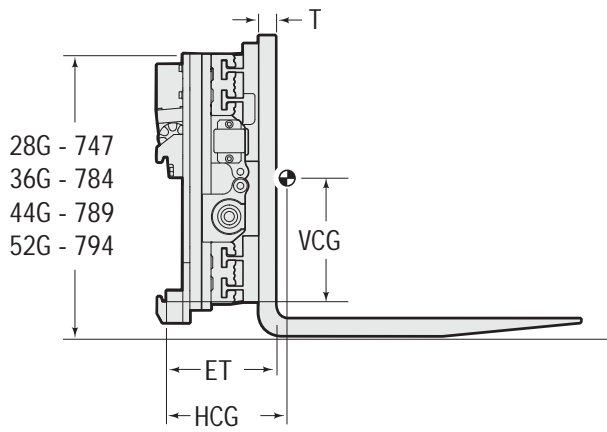
- Fast 360° rotation for improved productivity
- One piece frame bearings for increased service life
- Hydraulic cylinders are recessed in the frame for protection
- Open centre frame for improved driver visibility
- 20% larger bearing surface for longer bearing life
- Rugged lightweight construction
- High net capacity

OPTIONS

- Independent arm control
- Special pressure relief configurations
- Non-standard frame widths and opening ranges
- Load backrests
- Bolt on forks



G-SERIE REVOLVING FORK CLAMP



| Catalogue Order No. | Capacity @ Load Centre on forks (mm) | Capacity @ Load Centre as clamp (mm) | Frame width (mm) | Opening Range (mm) | Opening Range (mm) | Fork Size (mm) | Minimum truck carriage width (mm) | Effective thickness (mm) | Horizontal Centre of gravity (mm) | Vertical Centre of gravity (mm) | Weight | Mounting class |
|---------------------|--------------------------------------|--------------------------------------|------------------|--------------------|--------------------|----------------|-----------------------------------|--------------------------|-----------------------------------|---------------------------------|--------|----------------|
| | kg | kg | A | ITI | OTO | LxWxT | B | ET | HCG | VCG | kg | ISO 2328 |
| 28G-CFR-A223 ① | 1900@500 | 1400@500 | 950 | 310-1420 | 560-1670 | 1200x125x40 | 813 | 260 | 224 | 245 | 469 | 2A |
| 28G-CFR-A323 ① | 1900@500 | 1400@500 | 1050 | 310-1520 | 560-1770 | 1200x125x40 | 813 | 260 | 222 | 246 | 480 | 2A |
| 28G-CFR-A333 | 1900@500 | 1400@500 | 1050 | 460-1820 | 710-2070 | 1200x125x40 | 813 | 260 | 221 | 247 | 483 | 2A |
| 36G-CFR-A213 ① | 2200@500 | 1800@500 | 950 | 210-1250 | 460-1500 | 1200x125x50 | 813 | 302 | 233 | 265 | 568 | 2A |
| 36G-CFR-A223 ① | 2200@500 | 1800@500 | 950 | 310-1450 | 560-1700 | 1200x125x50 | 813 | 302 | 233 | 265 | 573 | 2A |
| 36G-CFR-A233 | 2200@500 | 1800@500 | 950 | 395-1620 | 645-1870 | 1200x125x50 | 813 | 302 | 233 | 266 | 576 | 2A |
| 36G-CFR-A323 ① | 2200@500 | 1800@500 | 1050 | 310-1550 | 560-1800 | 1200x125x50 | 813 | 302 | 231 | 267 | 587 | 2A |
| 36G-CFR-A333 | 2200@500 | 1800@500 | 1050 | 440-1710 | 690-1960 | 1200x125x50 | 813 | 302 | 231 | 268 | 591 | 2A |
| 36G-CFR-A513 ① | 2200@500 | 1800@500 | 1150 | 210-1450 | 460-1700 | 1200x125x50 | 813 | 302 | 230 | 268 | 593 | 2A |
| 36G-CFR-A533 | 2200@500 | 1800@500 | 1150 | 410-1850 | 660-2100 | 1200x125x50 | 813 | 302 | 230 | 269 | 604 | 2A |
| 36G-CFR-A723 ① | 2200@500 | 1800@500 | 1250 | 310-1750 | 560-2000 | 1200x125x50 | 813 | 302 | 229 | 270 | 612 | 2A |
| 36G-CFR-A733 | 2200@500 | 1800@500 | 1250 | 510-2150 | 760-2400 | 1200x125x50 | 813 | 302 | 228 | 270 | 622 | 2A |
| 36G-CFR-A933 | 2200@500 | 1800@500 | 1350 | 410-2050 | 660-2300 | 1200x125x50 | 813 | 302 | 227 | 270 | 630 | 2A |
| 36G-CFR-A943 | 2200@500 | 1800@500 | 1350 | 610-2450 | 860-2700 | 1200x125x50 | 813 | 302 | 227 | 271 | 641 | 2A |
| 44G-CFR-A213 ① | 2600@500 | 2200@500 | 950 | 210-1250 | 460-1500 | 1200x125x50 | 813 | 305 | 234 | 265 | 574 | 2A ② |
| 44G-CFR-A223 ① | 2600@500 | 2200@500 | 950 | 310-1450 | 560-1700 | 1200x125x50 | 813 | 305 | 234 | 266 | 580 | 2A ② |
| 44G-CFR-A323 ① | 2600@500 | 2200@500 | 1050 | 310-1550 | 560-1800 | 1200x125x50 | 813 | 305 | 232 | 268 | 594 | 2A ② |
| 44G-CFR-A333 | 2600@500 | 2200@500 | 1050 | 440-1710 | 690-1960 | 1200x125x50 | 813 | 305 | 232 | 268 | 599 | 2A ② |
| 44G-CFR-A513 ① | 2600@500 | 2200@500 | 1150 | 210-1450 | 460-1700 | 1200x125x50 | 813 | 305 | 231 | 269 | 601 | 2A ② |
| 44G-CFR-A533 | 2600@500 | 2200@500 | 1150 | 410-1850 | 660-2100 | 1200x125x50 | 813 | 305 | 231 | 270 | 612 | 2A ② |
| 44G-CFR-A723 ① | 2600@500 | 2200@500 | 1250 | 310-1750 | 560-2000 | 1200x125x50 | 813 | 305 | 230 | 270 | 619 | 2A ② |
| 44G-CFR-A733 | 2600@500 | 2200@500 | 1250 | 390-1905 | 640-2155 | 1200x125x50 | 813 | 305 | 230 | 270 | 623 | 2A ② |
| 44G-CFR-A933 | 2600@500 | 2200@500 | 1350 | 310-1850 | 560-2100 | 1200x125x50 | 813 | 305 | 229 | 270 | 632 | 2A ② |
| 52G-CFR-B313 ① | 3200@500 | 2600@500 | 1050 | 260-1445 | 560-1745 | 1200x150x50 | 813 | 348 | 294 | 257 | 681 | 3A |
| 52G-CFR-B413 ① | 3200@500 | 2600@500 | 1100 | 210-1395 | 510-1695 | 1200x150x50 | 813 | 348 | 293 | 257 | 686 | 3A |
| 52G-CFR-B433 | 3200@500 | 2600@500 | 1100 | 410-1795 | 710-2095 | 1200x150x50 | 813 | 348 | 292 | 259 | 701 | 3A |
| 52G-CFR-B513 ① | 3200@500 | 2600@500 | 1150 | 260-1545 | 560-1845 | 1200x150x50 | 813 | 348 | 292 | 258 | 698 | 3A |
| 52G-CFR-B713 ① | 3200@500 | 2600@500 | 1250 | 260-1645 | 560-1945 | 1200x150x50 | 813 | 348 | 290 | 260 | 714 | 3A |
| 52G-CFR-B833 | 3200@500 | 2600@500 | 1300 | 410-1995 | 710-2295 | 1200x150x50 | 813 | 348 | 288 | 261 | 734 | 3A |

① Fork Clamps suitable for EURO-Pallets.

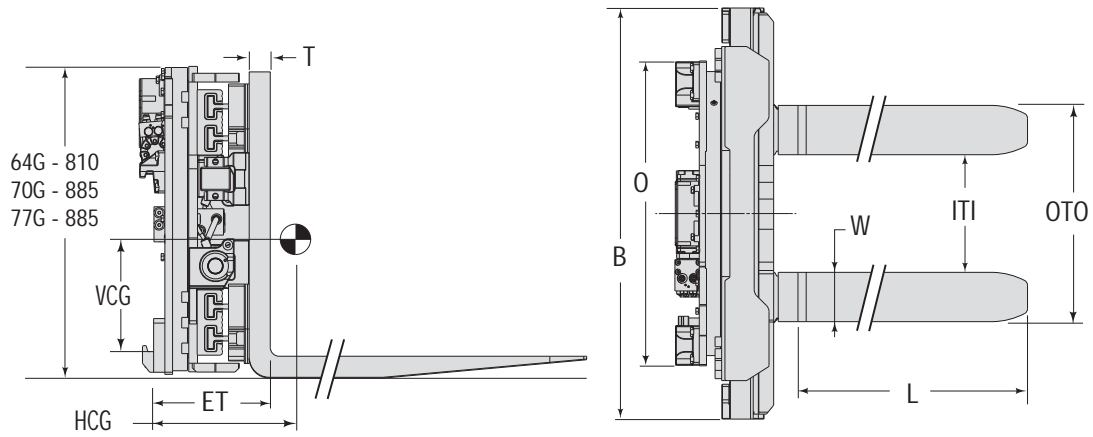
② Mounting class 3A available - Consult Cascade for specifications.

► Lift trucks with auxilliary pressures between 155 and 189 bar maximum require low pressure attachments. Lift trucks with auxilliary pressure between 190 and 250 bar maximum require high pressure attachments.

► Frame bumper not included.

► Bolt-On Forks

► 0° mounting is standard.



| Catalogue Order No. | Capacity @ Load Centre on forks (mm) | Capacity @ Load Centre as clamp (mm) | Frame width (mm) | Opening Range (mm) | Opening Range (mm) | Fork Size (mm) | Minimum truck carriage width (mm) | Effective thickness (mm) | Horizontal Centre of gravity (mm) | Vertical Centre of gravity (mm) | Weight (kg) | Mounting class |
|---------------------|--------------------------------------|--------------------------------------|------------------|--------------------|--------------------|----------------|-----------------------------------|--------------------------|-----------------------------------|---------------------------------|-------------|----------------|
| | kg | kg | B | ITI | OTO | LxWxT | O | ET | HCG | VCG | | |
| 64G-CFR-B512 ① | 3600@500 | 3200@500 | 1150 | 200-1400 | 500-1700 | 1000x150x50 | 795 | 349 | 246 | 298 | 833 | 3A |
| 64G-CFR-B513 ① | 3000@600 | 2700@600 | 1150 | 200-1400 | 500-1700 | 1200x150x50 | 795 | 349 | 272 | 288 | 856 | 3A |
| 64G-CFR-B523 | 3000@600 | 2700@600 | 1150 | 360-1720 | 660-2020 | 1200x150x50 | 795 | 349 | 272 | 289 | 872 | 3A |
| 64G-CFR-B533 | 3000@600 | 2700@600 | 1150 | 410-1800 | 710-2100 | 1200x150x50 | 795 | 349 | 271 | 289 | 876 | 3A |
| 64G-CFR-B723 | 3000@600 | 2700@600 | 1250 | 360-1820 | 660-2120 | 1200x150x50 | 795 | 349 | 268 | 291 | 905 | 3A |
| 64G-CFR-B913 ① | 3000@600 | 2700@600 | 1350 | 260-1720 | 560-2020 | 1200x150x50 | 795 | 349 | 266 | 292 | 930 | 3A |
| 64G-CFR-B933 | 3000@600 | 2700@600 | 1350 | 410-2020 | 710-2320 | 1200x150x50 | 795 | 349 | 265 | 293 | 945 | 3A |
| 64G-CFR-BA23 | 3000@600 | 2700@600 | 1450 | 360-2020 | 660-2320 | 1200x150x50 | 795 | 349 | 263 | 294 | 974 | 3A |
| 70G-CFR-B712 ① | 4200@500 | 3500@500 | 1250 | 200-1430 | 500-1730 | 1000x150x60 | 865 | 332 | 212 | 328 | 991 | 3A |
| 70G-CFR-B713 ① | 3500@600 | 3000@600 | 1250 | 200-1430 | 500-1730 | 1200x150x60 | 865 | 332 | 239 | 318 | 1019 | 3A |
| 70G-CFR-B723 | 3500@600 | 3000@600 | 1250 | 360-1770 | 660-2070 | 1200x150x60 | 865 | 332 | 239 | 319 | 1037 | 3A |
| 70G-CFR-B733 | 3500@600 | 3000@600 | 1250 | 410-1840 | 710-2140 | 1200x150x60 | 865 | 332 | 238 | 319 | 1043 | 3A |
| 70G-CFR-B913 ① | 3500@600 | 3000@600 | 1350 | 260-1720 | 560-2020 | 1200x150x60 | 865 | 332 | 237 | 320 | 1065 | 3A |
| 70G-CFR-B933 | 3500@600 | 3000@600 | 1350 | 410-2020 | 710-2320 | 1200x150x60 | 865 | 332 | 237 | 320 | 1082 | 3A |
| 70G-CFR-BA23 | 3500@600 | 3000@600 | 1450 | 360-2020 | 660-2320 | 1200x150x60 | 865 | 332 | 134 | 322 | 1112 | 3A |
| 77G-CFR-B713 ① | 4500@600 | 3500@600 | 1250 | 260-1620 | 560-1920 | 1200x150x65 | 865 | 332 | 246 | 315 | 1049 | 3A |
| 77G-CFR-B723 | 4500@600 | 3500@600 | 1250 | 420-1940 | 720-2240 | 1200x150x65 | 865 | 332 | 246 | 315 | 1066 | 3A |
| 77G-CFR-BA23 ① | 4500@600 | 3500@600 | 1450 | 260-1800 | 560-2100 | 1200x150x65 | 865 | 332 | 242 | 318 | 1122 | 3A |
| 77G-CFR-BA33 | 4500@600 | 3500@600 | 1450 | 420-2090 | 720-2390 | 1200x150x65 | 865 | 332 | 241 | 318 | 1139 | 3A |
| 77G-CFR-BC13 ① | 4500@600 | 3500@600 | 1550 | 170-1650 | 470-1950 | 1200x150x65 | 865 | 332 | 239 | 319 | 1145 | 3A |
| 77G-CFR-BC23 ① | 4500@600 | 3500@600 | 1550 | 260-1920 | 560-2220 | 1200x150x65 | 865 | 332 | 239 | 319 | 1157 | 3A |

- ① Fork Clamps suitable for EURO-Pallets.
- ▶ Lift trucks with auxiliary pressures between 155 and 189 bar maximum require low pressure attachments. Lift trucks with auxiliary pressure between 190 and 250 bar maximum require high pressure attachments.
- ▶ Frame bumper not included.
- ▶ Bolt-On Forks
- ▶ 0° mounting is standard.

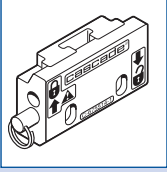
HYDRAULIC FUNCTIONS

| Model | Hydraulic Functions | Truck Auxiliary Valves Required |
|-------------------------------|---------------------|---------------------------------|
| Non-Sideshifting Models | 1 | 1 |
| Sideshifting Catalogue Models | 2 | 2 |
| Revolving Catalogue Models | 2 | 2 |

HYDRAULIC FLOW & PRESSURE

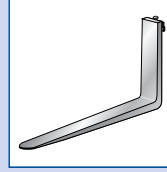
| Catalogue Order No. | Min. Flow L/min. | Rec. Flow L/min. | Max. Flow L/min. | Maximum Pressure (bar) |
|--|------------------|------------------|------------------|------------------------|
| Sideshifting & Non-Sideshifting Function | 19 | 26 | 38 | 250 bar |
| Rotator Function | 19 | 38 | 57 | 160 bar |

Options & Accessories



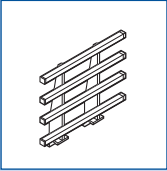
Quick-Disconnect Mounting Kit

Quick-Disconnect Mounting Kits increase versatility by allowing the attachments and trucks to be interchangeable.



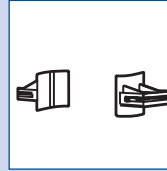
Special Fork Lengths, Modified Fork Sections and Drop Shank Forks

For special applications



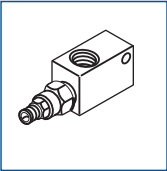
Load Backrest

Factory Installed 1200 mm high



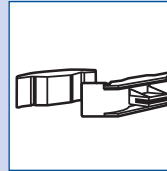
Slip-On 2-Drum Arms

Used for occasional handling of drums, slips easily onto forks. Allows handling of 1 or 2 drums.



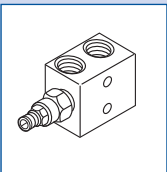
Single Pressure Setting Relief Valve

Limits hydraulic pressure in 1 line to attachment. 2 valves required per auxiliary function.



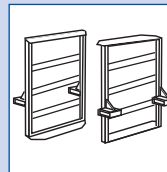
Slip-On 4-Drum Arms

Used for occasional handling of drums, slips easily onto forks providing the capability to handle 2 to 4 drums.



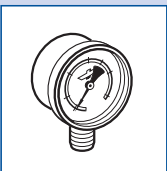
Bi-Directional Pressure Relief Valve

Allows single valve to be used for each auxiliary function to limit hydraulic pressure to attachment.



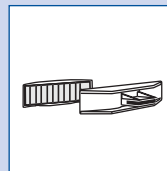
Big Bag Slip-On Shoes

For handling big bags.



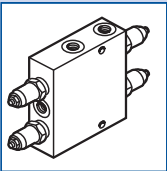
Pressure Gauge

Measure pressure in hydraulic cylinders up to 345 Bar.



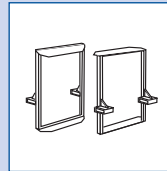
Slip-On Concrete Block Arms

For handling concrete blocks.



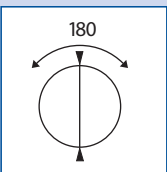
Hydraulic Flow Control Valve With Pressure Relief

For delivered flows up to 190 LPM. Flow control is bi-directional for one hydraulic circuit, includes adjustable pressure relief cartridges. Use in conjunction with the Low Pressure Tank Line Kit.



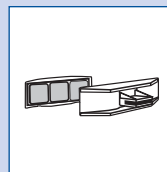
Slip-On Gitter Box Arms

For ease in handling gitter boxes.



180° Rotation Stop Group

Factory Installed. Provides a permanent rotation stop point at the vertical handling position.



Slip-On Multi-Purpose Arms

Reduces opening range by 110 mm.