



## The extremely durable fork positioner ideal for heavy applications.

### APPLICATIONS

The R-series Fork Positioners are ideal for applications where heavy lifting is required. This Fork Positioner is recommended in Metal, Stone and Automotive operations. Designed to fit on standard ITA class 4 trucks it can accept either ISO or pin-mounted forks.

### FEATURES

- Separate Sideshifter uses nylon upper bearings and lower rollers
- Excellent operator visibility
- No-weld installation
- Pre-Drilled to accept load backrest
- Fork Carriers accept forks 150 mm or 200 mm in width
- Cylinders located inside the top frame to resist corrosion caused from debris
- Removable top frame cover for easy access for servicing cylinders
- Design allows forks to be positioned with virtually no wear on frame or fork hooks.

### OPTIONS

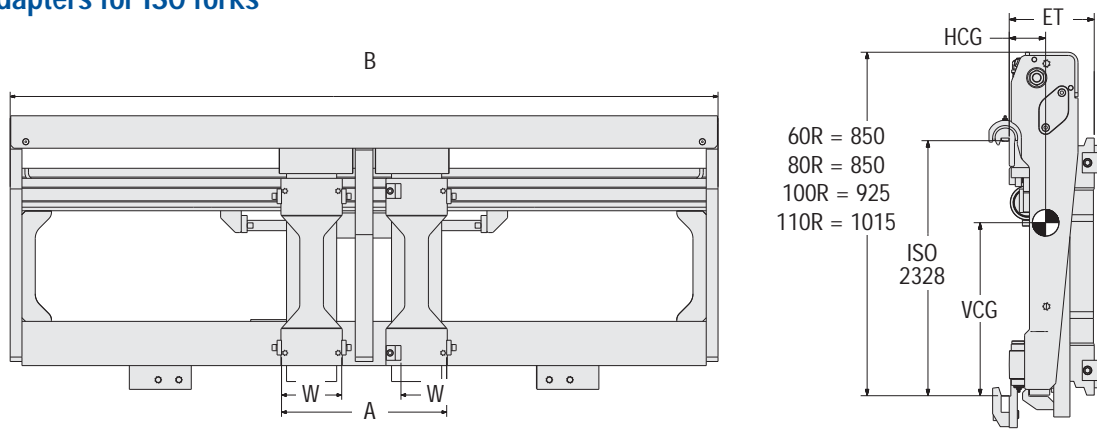
- Quick-Disconnect mounting hooks
- Special fork sections, lengths and opening ranges
- 1500 mm or 1800 mm load backrest
- Boom arms
- Chrome bar and wipers for operating in contaminated environments
- Chamfered forks and check valves for cylindrical loads
- Special carriers for bolt-on forks





**IMPORTANT:** Regulations may require the installation of a backrest.

## Hook-on, Adapters for ISO forks



Model	Capacity @ Load Centre kg@mm	Frame Width (mm) B	Fork Pocket Width (mm) W	Opening Range Out To Out (mm) A	Minimum Truck Carriage Width mm	Horizontal Centre of Gravity (mm) HCG	Vertical Centre of Gravity (mm) VCG	Effective Thickness (mm) ET	Weight kg	Mounting Class ISO 2328
60R-FPS-C201	6000@600	1400	150 ①③	560-1280	1100	96	417	210	602	4
60R-FPS-C221	6000@600	1500	150 ①③	560-1380	1100	95	419	210	618	4
60R-FPS-C241	6000@600	1860	150 ①③	560-1740	1360	94	424	210	686	4
60R-FPS-C261	6000@600	2000	150 ①③	560-1880	1500	93	426	210	713	4
60R-FPS-C281	6000@600	2100	150 ①③	560-1980	1600	92	428	210	732	4
80R-FPS-C201	8000@600	1860	150 ①③	560-1740	1460	94	424	210	686	4
80R-FPS-C221	8000@600	2000	150 ①③	560-1880	1600	93	426	210	713	4
80R-FPS-C241	8000@600	2100	150 ①③	560-1980	1700	92	428	210	732	4
80R-FPS-C261	8000@600	2200	150 ①③	560-2080	1800	91	429	210	752	4
80R-FPS-C281	8000@600	2400	150 ①③	560-2280	2000	90	431	210	791	4
100R-FPS-C201	8000@900	1820	200 ②③	560-1680	1800	100	430	230	912	4
100R-FPS-C231	8000@900	2220	200 ②③	560-2080	2000	98	433	230	1022	4
100R-FPS-C261	8000@900	2420	200 ②③	560-2280	2180	98	435	230	1065	4
110R-FPS-D201	11000@600	2020	200 ②③	560-1880	1800	104	490	240	1040	5
110R-FPS-D231	11000@600	2220	200 ②③	560-2080	2000	103	495	240	1095	5
110R-FPS-D261	11000@600	2420	200 ②③	560-2280	2180	101	500	240	1150	5

- ▶ Standard ISO forks can be used, forks not included
- ▶ Special frame widths and opening ranges available.
- ▶ Maximum fork length 2600 mm. For longer forks contact Cascade.

- ① 60-80R: Adjustable to one alternative fork width = 200. Opening Range OTO does not change.
- ② 100-110R: Adjustable to one alternative fork width = 150. Opening Range OTO does not change.
- ③ On all models, the 150 mm fork width can be installed in two ways. Maintaining opening range OTO or reducing opening range OTO - 100 mm.

## HYDRAULIC FUNCTIONS

Model	Hydraulic Functions	Truck Auxiliary Valves Required
R-Series	2	2

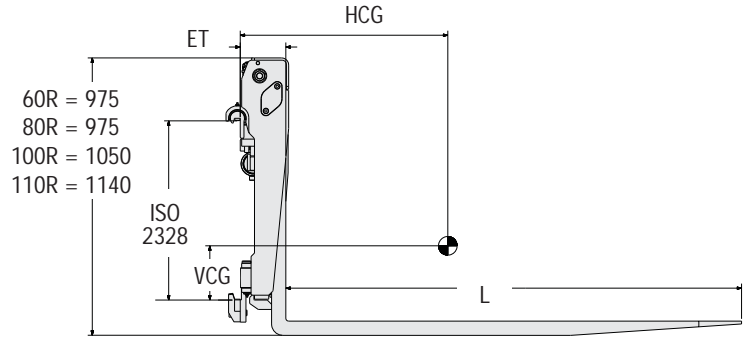
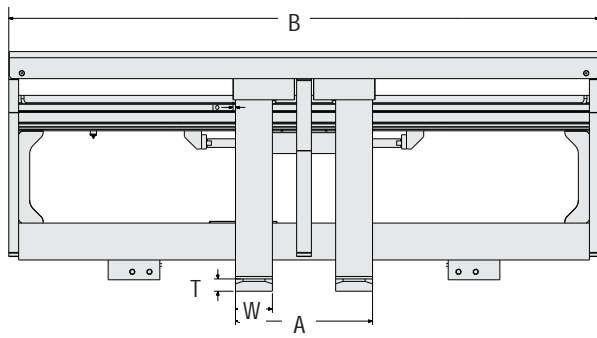
## HYDRAULIC FLOW & PRESSURE (L/MIN.)

Model	Maximum Pressure bar	Minimum Flow	Recom. Flow	Maximum Flow
60R Sideshifter	180	30	45	60
80R Sideshifter	180	35	55	75
100R Sideshifter				
110R Sideshifter				



**IMPORTANT:** Regulations may require the installation of a backrest.

Hook-on, with Shaft forks



60R = 975  
80R = 975  
100R = 1050  
110R = 1140

Model	Capacity @ Load Centre kg@mm	Frame Width (mm) B	Fork Size (mm) L x W x T	Opening Range Out To Out (mm) A	Minimum Truck Carriage Width mm	Horizontal Centre of Gravity (mm) HCG	Vertical Centre of Gravity (mm) VCG	Effective Thickness (mm) ET	Weight kg	Mounting Class ISO 2328
60R-FPS-C101	6000@600	1400	1200x150x60	560-1280	1100	200	318	170	680	4A
60R-FPS-C121	6000@600	1500	1200x150x60	560-1380	1100	196	321	170	695	4A
60R-FPS-C141	6000@600	1860	1200x150x60	560-1740	1300	185	335	170	760	4A
60R-FPS-C161	6000@600	2000	1200x150x60	560-1880	1400	182	339	170	788	4A
60R-FPS-C181	6000@600	2100	1200x150x60	560-1980	1500	180	343	170	808	4A
80R-FPS-C101	8000@600	1860	1200x150x70	560-1740	1300	198	323	180	802	4A
80R-FPS-C121	8000@600	2000	1200x150x70	560-1880	1400	194	328	180	828	4A
80R-FPS-C141	8000@600	2100	1200x150x70	560-1980	1500	192	331	180	848	4A
80R-FPS-C161	8000@600	2200	1200x150x70	560-2080	1600	188	334	180	868	4A
80R-FPS-C181	8000@600	2400	1200x150x70	560-2280	1800	184	341	180	907	4A
80R-FPS-C103	8000@600	1860	1200x200x60	560-1740	1300	207	309	170	843	4A
80R-FPS-C123	8000@600	2000	1200x200x60	560-1880	1400	204	315	170	871	4A
80R-FPS-C143	8000@600	2100	1200x200x60	560-1980	1500	201	318	170	892	4A
80R-FPS-C163	8000@600	2200	1200x200x60	560-2080	1600	198	322	170	910	4A
80R-FPS-C183	8000@600	2400	1200x200x60	560-2280	1800	193	328	170	950	4A
100R-FPS-C101	8000@900	1820	1800x200x70	560-1680	1800	301	323	185	1202	4A
100R-FPS-C131	8000@900	2220	1800x200x70	560-2080	2000	280	338	185	1310	4A
100R-FPS-C161	8000@900	2420	1800x200x70	560-2280	2180	275	348	185	1365	4A
110R-FPS-D101	11000@600	2020	1200x200x70	560-1880	1800	178	425	185	1160	5A
110R-FPS-D131	11000@600	2220	1200x200x70	560-2080	2000	172	433	185	1218	5A
110R-FPS-D161	11000@600	2420	1200x200x70	560-2280	2180	169	441	185	1272	5A

- ▶ Special frame widths and opening ranges available.
- ▶ Maximum fork lengths 3200 mm. For longer fork lengths consult Cascade.
- ▶ Price includes forks.

**HYDRAULIC FUNCTIONS**

Model	Hydraulic Functions	Truck Auxiliary Valves Required
R-Series	2	2

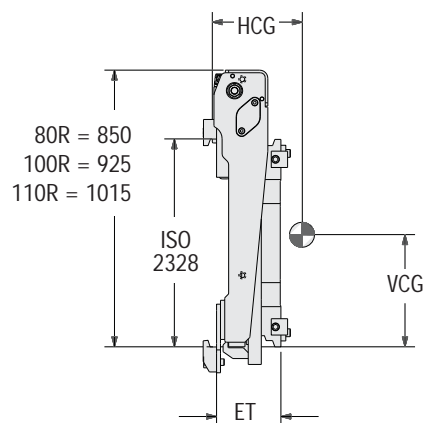
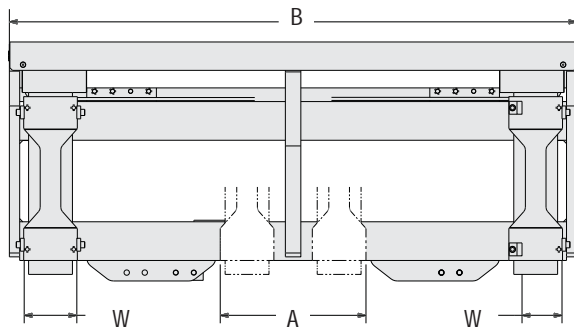
**HYDRAULIC FLOW & PRESSURE (L/MIN.)**

Model	Maximum Pressure bar	Minimum Flow	Recom. Flow	Maximum Flow
60R Sideshifter	180	30	45	60
80R Sideshifter	180	35	55	75
100R Sideshifter				
110R Sideshifter				



**IMPORTANT:** Regulations may require the installation of a backrest.

## Hook-on, Adapters for ISO forks



Model	Capacity @ Load Centre kg@mm	Frame Width (mm) B	Fork Adapter Width (mm) W	Opening Range Out To Out (mm) A	Minimum Truck Carriage Width mm	Horizontal Centre of Gravity (mm) HCG	Vertical Centre of Gravity (mm) VCG	Effective Thickness (mm) ET	Weight kg	Mounting Class ISO 2328
80R-FPB-C201	8000@600	1400	150 ①③	560 - 1280	1100	85	403	197	605	4
80R-FPB-C211	8000@600	1500	150 ①③	560 - 1380	1100	85	405	197	625	4
80R-FPB-C231	8000@600	1860	150 ①③	560 - 1740	1300	84	409	197	687	4
80R-FPB-C241	8000@600	2000	150 ①③	560 - 1880	1400	84	410	197	713	4
80R-FPB-C251	8000@600	2100	150 ①③	560 - 1980	1500	84	411	197	729	4
80R-FPB-C261	8000@600	2200	150 ①③	560 - 2080	1600	83	413	197	748	4
80R-FPB-C281	8000@600	2400	150 ①③	560 - 2280	1800	83	415	197	784	4
100R-FPB-C201	10000@600	1820	200 ②③	560-1680	1400	90	450	212	832	4
100R-FPB-C231	10000@600	2220	200 ②③	560-2080	1800	89	453	212	916	4
100R-FPB-C261	10000@600	2420	200 ②③	560-2280	2000	89	455	212	960	4
110R-FPB-D201	11000@600	2020	200 ②③	560-1880	1600	95	510	222	945	5
110R-FPB-D231	11000@600	2220	200 ②③	560-2080	1800	94	515	222	987	5
110R-FPB-D261	11000@600	2420	200 ②③	560-2280	2000	93	520	222	1030	5

- ▶ Standard ISO forks can be used, forks not included
- ▶ Special frame widths and opening ranges available.
- ▶ Maximum fork length 2600 mm. For longer forks contact Cascade.

- ① 80R: Adjustable to one alternative fork width = 200. Opening Range OTO does not change.
- ② 100-110R: Adjustable to one alternative fork width = 150. Opening Range OTO does not change.
- ③ On all models, the 150 mm fork width can be installed in two ways. Maintaining opening range OTO or reducing opening range OTO - 100 mm.

## HYDRAULIC FUNCTIONS

Model	Hydraulic Functions	Truck Auxiliary Valves Required
R -Series Non Sideshifting	1	1

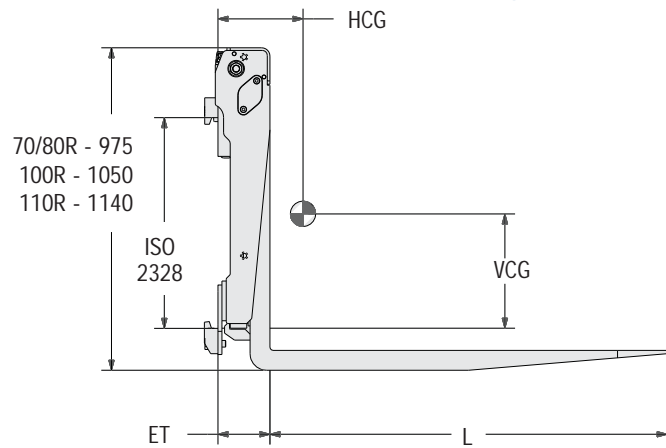
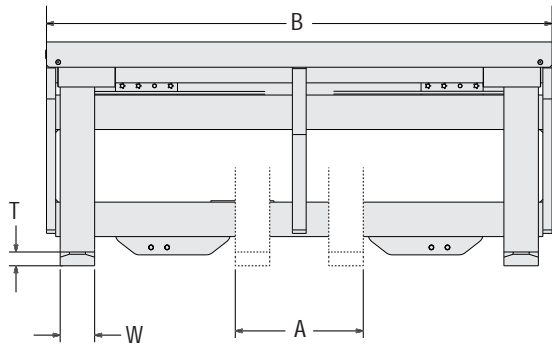
## HYDRAULIC FLOW & PRESSURE (L/MIN.)

Model	Maximum Pressure bar	Minimum Flow	Recom. Flow	Maximum Flow
80R NSS	120	35	55	75
100R NSS				
110R NSS				



**IMPORTANT:** Regulations may require the installation of a backrest.

Hook-on, with Shaft forks



Model	Capacity @ Load Centre kg@mm	Frame Width (mm) B	Fork Size (mm) L x W x T	Opening Range Out To Out (mm) A	Minimum Truck Carriage Width mm	Horizontal Centre of Gravity (mm) HCG	Vertical Centre of Gravity (mm) VCG	Effective Thickness (mm) ET	Weight kg	Mounting Class ISO 2328
70R-FPB-C101	7000@600	1400	1200x150x60	560 - 1280	1100	187	312	157	693	4A
70R-FPB-C121	7000@600	1500	1200x150x60	560 - 1380	1100	184	313	157	710	4A
70R-FPB-C141	7000@600	1860	1200x150x60	560 - 1740	1300	175	322	157	773	4A
70R-FPB-C161	7000@600	2000	1200x150x60	560 - 1880	1400	172	325	157	798	4A
70R-FPB-C181	7000@600	2100	1200x150x60	560 - 1980	1500	170	327	157	815	4A
80R-FPB-C101	8000@600	1860	1200x150x70	560 - 1740	1300	188	312	167	807	4A
80R-FPB-C121	8000@600	2000	1200x150x70	560 - 1880	1400	185	316	167	836	4A
80R-FPB-C141	8000@600	2100	1200x150x70	560 - 1980	1500	182	320	167	855	4A
80R-FPB-C161	8000@600	2200	1200x150x70	560 - 2080	1600	180	322	167	871	4A
80R-FPB-C181	8000@600	2400	1200x150x70	560 - 2280	1800	176	327	167	906	4A
80R-FPB-C103	8000@600	1860	1200x200x60	560 - 1740	1300	198	300	157	853	4A
80R-FPB-C123	8000@600	2000	1200x200x60	560 - 1880	1400	194	303	157	878	4A
80R-FPB-C143	8000@600	2100	1200x200x60	560 - 1980	1500	192	306	157	895	4A
80R-FPB-C163	8000@600	2200	1200x200x60	560 - 2080	1600	189	310	157	913	4A
80R-FPB-C183	8000@600	2400	1200x200x60	560 - 2280	1800	185	315	157	948	4A
100R-FPB-C101	8000@900	1820	1800x200x70	560 - 1680	1800	300	323	167	1125	4A
100R-FPB-C131	8000@900	2220	1800x200x70	560 - 2080	2000	290	338	167	1210	4A
100R-FPB-C161	8000@900	2420	1800x200x70	560 - 2280	2180	280	348	167	1250	4A
110R-FPB-D101	11000@600	2020	1200x200x70	560 - 1880	1800	191	425	167	1115	5A
110R-FPB-D131	11000@600	2220	1200x200x70	560 - 2080	2000	187	433	167	1157	5A
110R-FPB-D161	11000@600	2420	1200x200x70	560 - 2280	2180	183	441	167	1198	5A

- ▶ Special frame widths and opening ranges available.
- ▶ Maximum fork lengths 3200 mm. For longer fork lengths consult Cascade.

**HYDRAULIC FUNCTIONS**

Model	Hydraulic Functions	Truck Auxiliary Valves Required
R-Series Non Sideshifting	1	1

**HYDRAULIC FLOW & PRESSURE (L/MIN.)**

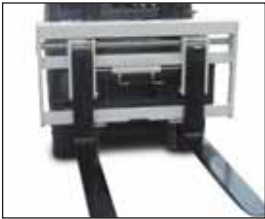
Model	Maximum Pressure bar	Minimum Flow	Recom. Flow	Maximum Flow
70R NSS	120	30	45	60
80R NSS	120	35	55	75
100R NSS				
110R NSS				

## OTHER FORK POSITIONER MODELS



### ***W-Series Fork Positioner***

Heavy duty fork positioners for a wide range of pallet and load handling applications both indoors and outdoors. Available with both hook-on mounting or integral mast mounting for optimal truck capacity. Integral hydraulic sideshift enables sideshift via the fork positioning cylinders, allowing best possible visibility. Design includes either bearing mounted pin-type forks with bottom heel rollers or bearing/roller mounted ISO fork carriers.



### ***G-Series Compact Fork Positioner***

Recommended for use in distribution and warehousing as well as more demanding manufacturing, car production and food processing plants. Equipped with an ISO hook-on mounting and an external sideshifter. Design enables standard ISO hook type forks to be used. This compact unit has excellent visibility through the frame allowing the operator to quickly and accurately position the forks from the driver's seat for handling a variety of pallet and container configurations.



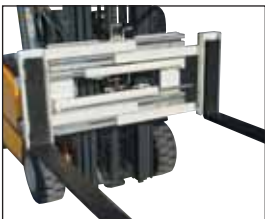
### ***F-Series Fork Positioner***

Recommended for distribution and warehousing operations as well as in manufacturing and food process plants. It is equipped with ISO hook-on mounting and an external sideshifter. Design enables standard ISO hook type forks to be used.



### ***K-Series Fork Positioner***

Recommended for distribution, warehousing and manufacturing operations. It is an economical fork positioning option that features an external sideshifter and ISO hook-on mounting. An optional Radio Frequency Hydraulic Control kit permits the use of a single auxiliary valve to control an additional hydraulic function and offers minimum installation time.



### ***UPF-Series Fork Positioner***

The UPF fork positioner has a telescopic frame enabling the arms to extend outside the carriage. The UPF series are equipped with ISO fork adaptors for use with standard ISO hook type lift truck forks. Equipped with ISO hook on mounting and an external sideshifter.



### ***G/D-Series Fork Positioner***

Recommended for applications requiring a wide opening range to support the load. Unlike conventional fork positioners, the G/D series can extend the forks outside the carriage. The G/D series are rugged and reliable fork positioners requiring minimum maintenance.